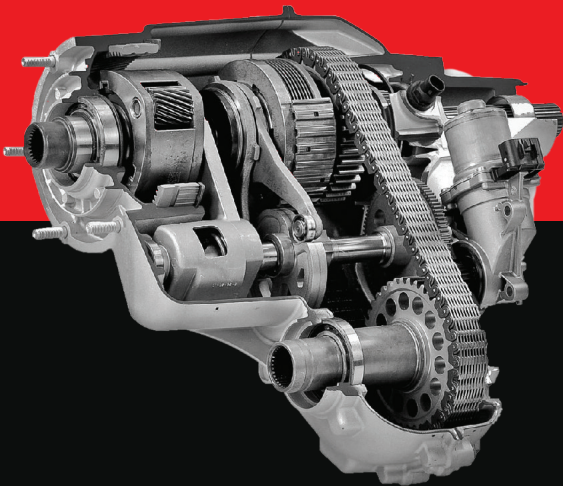
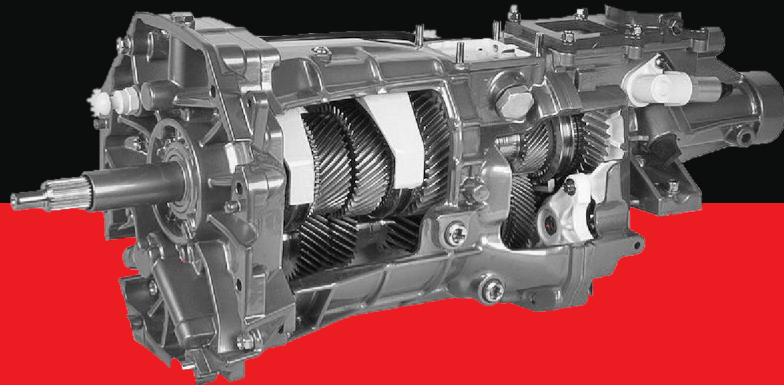


PROACTIVE GEARS

Driveline Component Solutions



WWW.PROACTIVEGEARS.COM

Table of Contents

Magna Power Transfer Case Series	2-7
New Venture 261/263 Transfer Case	8-9
New Venture 271/273 Transfer Case	10
New Venture 246 Transfer Case	11
Misc. Transfer Case Components	12
Transfer Case Bearing and Seal Rebuild Kits	13
NV4500 Transmission	14-15
NV5600 Transmission	16-17
G56 Transmission	18-19
TREMEC T56 Transmission	20-21
TREMEC OEM Full Assemblies	22
ZF S5-42 / ZF S5-47 Transmission	23
ZF S6-650 / ZF S6-750 Transmission	24
Misc. Transmission Components	25
Manual Transmission Bearing and Seal Rebuild Kits	26
Warranty	27-28

Magna Power Transfer Case Series

Starting with the 2007 model year, General Motors introduced a series of new transfer case designs built by Magna Powertrain replacing the New Venture Gear units used in the past. The new units are available in the models below:

MODEL	ProActive Gear P/N	RPO	TRANS	Input Shaft Splines	Output Shaft Splines	Chain Size	Application
MP1222LD	PG1222-1	NQG	4L60E	27T	32T	7/16-1.25"	1/2 Ton
MP1222LD	PG1222-2	NQG	6L80	32T	32T	7/16-1.25"	1/2 Ton
MP1225HD	PG1225GM-1	NQG	6L90	29T	31T	7/16-1.5"	3/4 Ton
MP1226SD	PG1226GM-2/PG1226GM-3	NQG	6L90LCT1000	29T	31T	7/16-1.5"	3/4-1 Ton
MP1625HD	PG1625-1	NQF	6L90	29T	31T	7/16-1.5"	3/4 Ton
MP1626SD	PG1626-2/PG1626-3	NQF	6L90LCT1000	29T/33T	31T/32T	7/16-1.5"	3/4-1 Ton
MP3023LD	PG3023-1	NQH	4L60E	27T	32T	7/16-1.25"	1/2 Ton
MP3023LD	PG3023-2	NQH	2ML70	32T	32T	7/16-1.25"	1/2 Ton
MP3024HD	PG3024-1	NQH	6L90	29T	31T	7/16-1.5"	3/4 Ton

- NQG: Transfer Case, Manual Shift, Floor Mounted Shifter
- NQF: Transfer Case, Electronic shift with dial control
- NQH: Transfer Case, Auto/Active Shift, 2-Speed
- **All models use Dexron VI fluid

COMMON PROBLEMS

3023/3024 Shift lever bearing failure: Bearings are overheated due to the lever balls being placed off center from the lever, resulting in uneven pressure on the bearing. Typically only the 3023LD experienced this problem, GM fixed this by only using the HD levers with thicker collars and 10MM balls (vs 13MM) to apply pressure evenly.

ProActive Gears only makes the HD levers to be used with 10MM lever balls, which will work in both transfer cases.

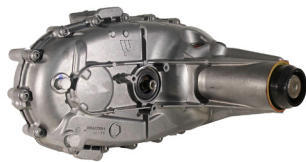
ALL CASES

Grinding, popping out of gear: caused by worn range forks and its pads due to contact area available. **ProActive Gear** range forks and mating high/low clutches are made with a wider flange on the slider and increased fork area to compliment this increased contact area. These will also fit previous models without the increased contact area.

ALL CASES

Mainshaft snap ring failure causing collateral damage within the transfer case.

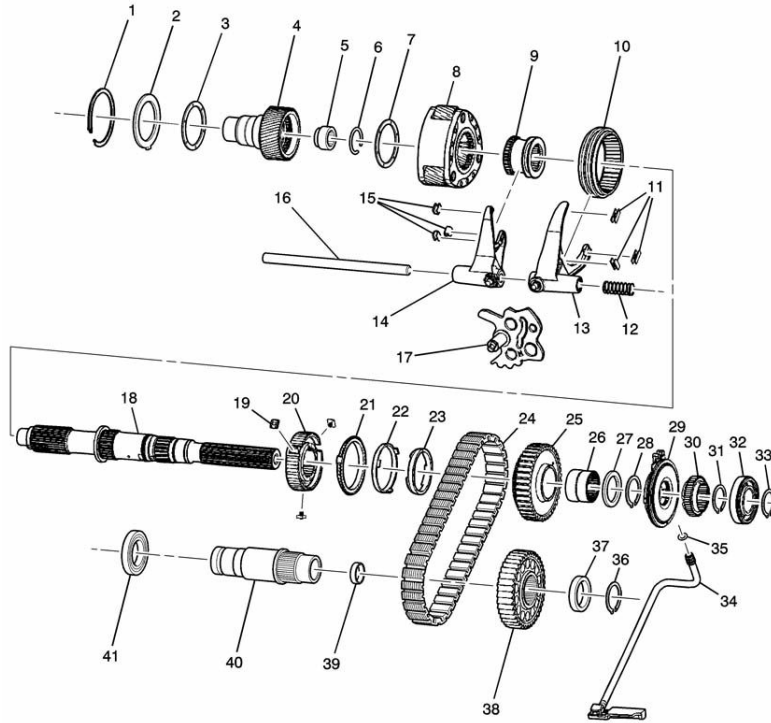
ProActive Gears has made a Heavy Duty snap ring to fit all mainshafts to correct this issue.



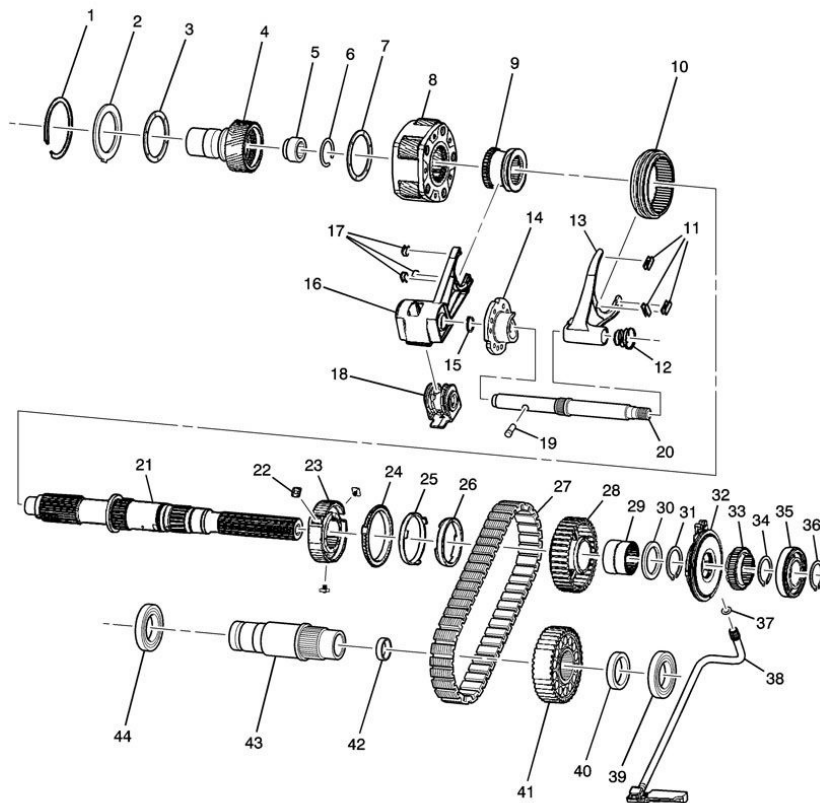
Check out ProActive Gears aftermarket components and remanufactured assemblies for these MP Transfer Cases containing the highest quality in the aftermarket!

Magna Power Transfer Case Series

MP 1225/1226



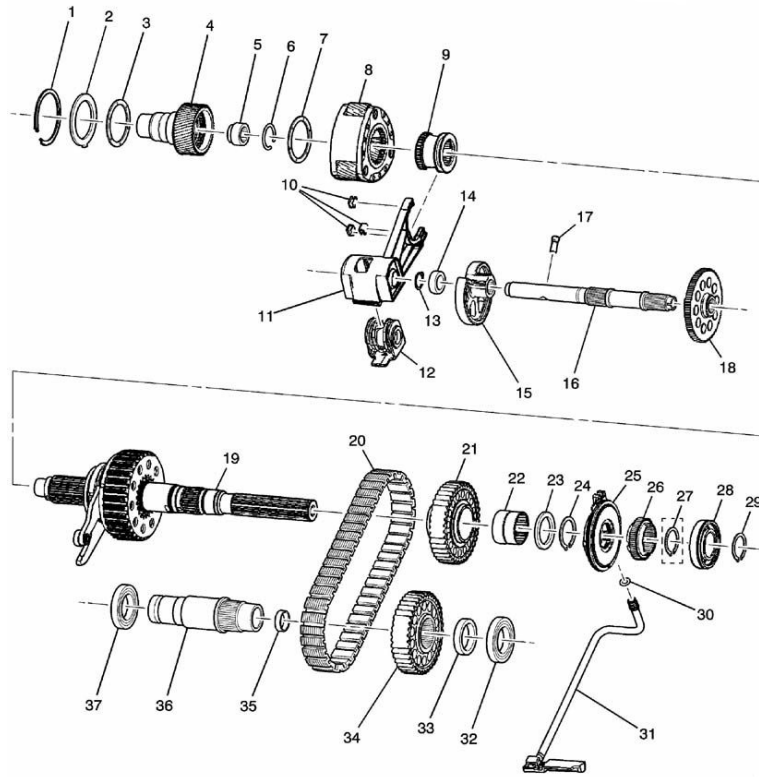
MP 1625/1626



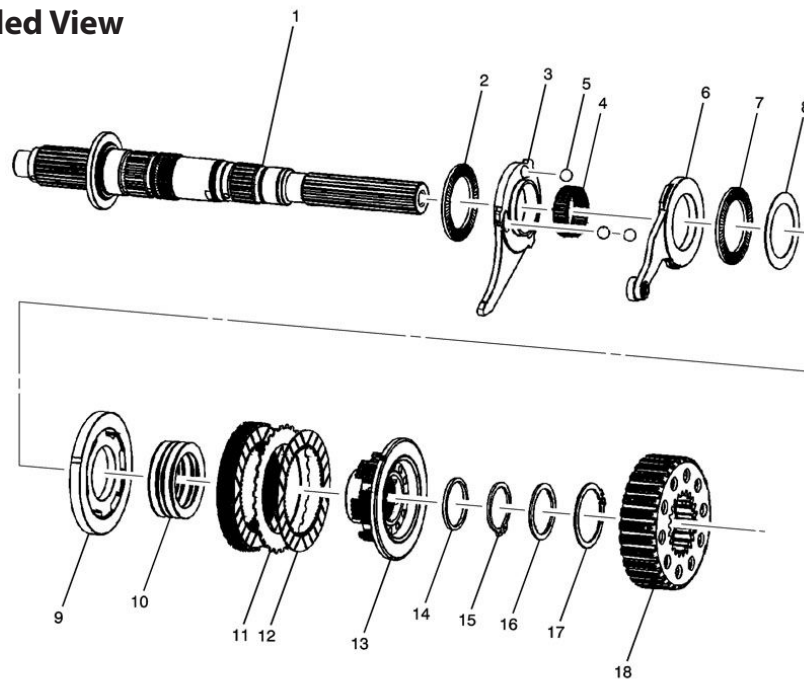
Magna Power Transfer Case Series

Transfer Case

MP 3023/3024



**MP 3023/3024
 Main Shaft Exploded View**



GM Magna Power Transfer Case Components



P/N	OEM REF	Description
Input Gears		
19132977PG	19132977	MP 3023/3024; 27-Spline, First Design Planetary, TOOTH GROUND , Includes Inner Bearing
19132978PG	19132978	MP 3023/3024; 32-Spline, First Design Planetary, TOOTH GROUND , Includes Inner Bearing
19132979PG	19132979	MP 1225/1226; MP 1625/1626; 29-Spline, First Design Planetary, Round Adapter Pattern, TOOTH GROUND , Includes Inner Bearing
19299086PG	19299086	MP 1225/1226; MP 1625/1626; 29-Spline, Second Design Planetary, Round Adapter Pattern, TOOTH GROUND , Includes Inner Bearing
19299087PG	19299087	MP 1225/1226; MP 1625/1626; 29-Spline, Second Design Planetary, Oval Adapter Pattern, TOOTH GROUND , Includes Inner Bearing
High/Low Clutch; Range Sleeve		
19260068PG	19260068/19260067	MP 1225/1226; MP 1625/1626; , MP 3023/3024; 30T, Wider Flange (1st Design 148MM)
19299093PG	19299093/19299092	MP 1225/1226; MP 1625/1626; , MP 3023/3024; 29T, Wider Flange (1st Design 142MM)
Mainshafts		
19133059PG	19133059/19178898	MP 3023; 32-Spline; Re-engineered to Include a HD Snap Ring
19133060PG	19133060	MP 3024; 31-Spline; Re-engineered to Include a HD Snap Ring
19133062PG	19133062	MP 1225/1226; MP 1625/1626; 31-Spline; Re-engineered to Include a HD Snap Ring
Synchro Sleeve		
19133094PG	19133094	MP 1222/1225/1226/1625/1626
Forks/Levers		
19260065PG	19260065	Range Fork; MP 1225/1226 , Re-engineered to Include 2-Piece Pad Style(19260066), Fits Wide & Narrow Flange Range Sleeve
19133050PG	19133050/19209164	Mode Fork; MP 1225/1226 , Includes 3-Piece Pad Style
19133031PG	19133031PG	Range Fork; MP 1625/1626; MP 3023/3024 , Re-engineered to Include 2-Piece Pad Style(19260066), Fits Wide & Narrow Flange Range Sleeve
19133041PG	19133041PG	Mode Fork; MP 1625/1626 , Includes 3-Piece Pad Style
19257393PG	19257393PG	HD Shift Control Lever w/ Bearing; MP 3023/3024 ; Uses 10mm Clutch Lever Ball (2nd Design) Purchase with 19257394
19257394PG	19257394PG	HD Shift Control Lever; MP 3023/3024 ; Uses 10mm Clutch Lever Ball (2nd Design) Purchase with 19257393
Sprockets		
19133205PG	19133205	LD Drive Sprocket; MP 3010/3023 , use with HV501
19133134PG	19133134	LD Driven Sprocket; MP 3010/3023 , use with HV501
19133206PG	19133206	1.5" Drive Sprocket; MP 3023/3024 use with HV074/HV502
19133135PG	19133135	1.5" Driven Sprocket; MP 1225/1226; MP 1625/1626; MP 3023/3024 use with HV074/HV502
19133102PG	19133102	1.25" Drive Sprocket MP 1222/1225/1226 use with HV501, Driven Sprocket is 19133134
19133103PG	19133103	1.5" Drive Sprocket; MP 1222/1225/1226; MP 1625/1626 use with HV074, Driven Sprocket is 19133135
Chains		
HV501		.4346"x1.25"x84P RJ Chain; Same as HV076; MP1225/1226/1625/1626/3023/3024
HV074		.4346"x1.5"x84P; RP Chain; NP261XHD/263XHD; MP1225/1226/1625/1626/3023/3024; BW4484/4485
Rebuild Kits		
70-1222		GM Magna Power 1222, 1st Design Application Years 2007-2011
70-1225		GM Magna Power 1225/1226; 1st Design Application Years 2007-2011
70-1225L		GM Magna Power 1225/1226; 2nd Design Application Years 2012-2016
70-1625		GM Magna Power 1625/1626; 1st Design Application Years 2007-2011
70-1625L		GM Magna Power 1625/1626; 2nd Design Application Years 2012-2016
70-3023		GM Magna Power 3023; 1st Design Application Years 2007-2011
70-3023L		GM Magna Power 3023; 2nd Design Application Years 2012-2016
70-3024		GM Magna Power 3024; 1st Design Application Years 2007-2011

Transfer Case Assemblies

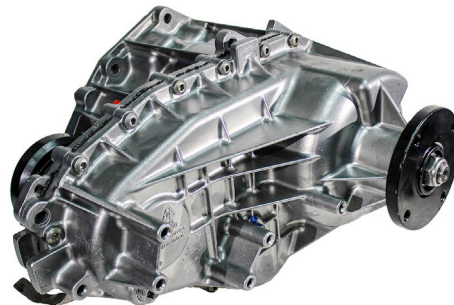


ProActive Gear Transfer Cases

Remanufactured to meet or exceed OEM specifications to provide superior quality with perfect fit and function. Each transfer case passes a comprehensive battery of tests including recreating actual driving conditions to analyze the performance of each transfer case.

Additional features:

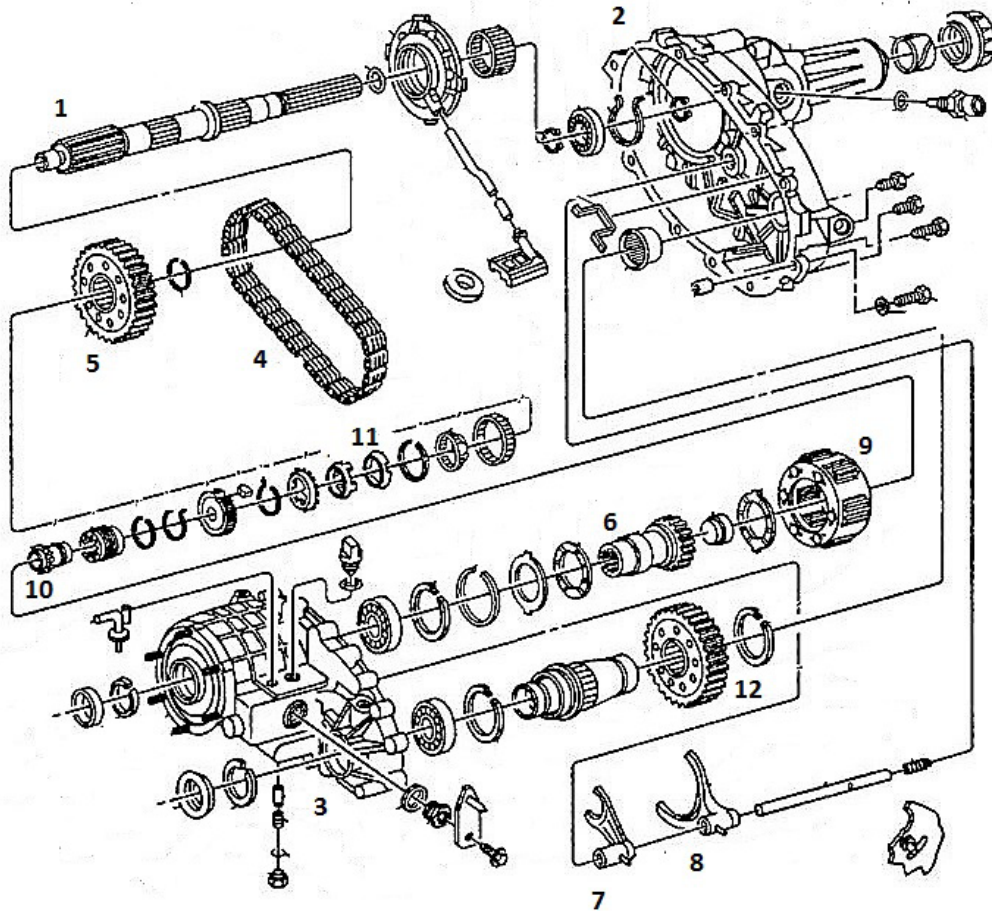
- Backlash, mesh load, leak, and rotational torque quality-control testing is performed on every unit
- OEM cores are processed as individual units throughout the teardown and assembly process
- Cores are cleaned using a hydro-blast cleaning and rinse process
- All case halves are wet sanded to ensure perfect mating surfaces
- Loctite gasket eliminator and primer used to seal all aluminum mating surfaces
- Remanufactured in a ISO9001:2008 USA facility
- Problem-solving applications include Jeep transfer cases with slip yoke eliminator kits and GM cases with oil pump wear-savers installed
- 12 months/12,000 mile limited warranty



GM Magna Power Transfer Case Assemblies

P/N	OEM REF	Transfer Case	Description
PG1225GM-1	12578114; 19125659; 24243014; 24245993; 24247214; 24252687	MP1225HD - Chevrolet Silverado 2500 HD (2007-2010), Chevrolet Suburban 2500 (2009-2010), GMC Sierra 2500 HD (2007-2010), GMC Yukon XL 2500 (2009-2010)	29 Spline Input, 31 Spline Rear Slip Output, Female Spline Front Output, Manual Shift
PG1226GM-1	12578115; 19125660; 19125672; 24243015; 24253512; 24243560; 24244453; 24247207; 24252680	MP1226XHD - Chevrolet Silverado 2500 HD (2007-2010), Chevrolet Silverado 3500 Classic (2007), Chevrolet Silverado 3500 HD (2007-2010), GMC Sierra 2500 HD (2007-2010), GMC Sierra 3500 Classic (2007), GMC Sierra 3500 HD (2007-2010)	29 Spline Input, 31 Spline Rear Slip Output, Female Spline Front Output
PG3023-1	12587651; 19125650; 24243562; 24247208; 24250862; 24252681	MP3023LD - Chevrolet Avalanche (2008-2009), Chevrolet Silverado 1500 (2007-2013), Chevrolet Suburban 1500 (2008), Chevrolet Tahoe (2008), GMC Sierra 1500 (2007-2013), GMC Yukon (2008), GMC Yukon XL 1500 (2008)	27 Spline Input, 32 Rear Slip Output Female Spline Front Output (Electric Shift)
PG3023-1M	12587651; 19125650; 24243562; 24247208; 24250862; 24252681	MP3023LD - Chevrolet Avalanche (2008-2009), Chevrolet Silverado 1500 (2007-2013), Chevrolet Suburban 1500 (2008), Chevrolet Tahoe (2008), GMC Sierra 1500 (2007-2013), GMC Yukon (2008), GMC Yukon XL 1500 (2008)	27 Spline Input, 32 Rear Slip Output Female Spline Front Output (Electric Shift) (Includes Shift Motor)
PG1626-2	12578110; 19125656; 19125671; 24244451; 24245990; 24247209; 24250863; 24252682; 24253511	MP1626XHD - Chevrolet Silverado 2500 HD (2007-2013), Chevrolet Silverado 3500 Classic (2007), Chevrolet Silverado 3500 HD (2007-2013), GMC Sierra 2500 HD (2007-2013), GMC Sierra 3500 Classic (2007), GMC Sierra 3500 HD (2007-2013)	(Electric Shift) 29 Spline Input Gear, 31 Rear Slip, Female Spline Front Output Yoke
PG1626-2M	12578110; 19125656; 19125671; 24244451; 24245990; 24247209; 24250863; 24252682; 24253511	MP1626XHD - Chevrolet Silverado 2500 HD (2007-2013), Chevrolet Silverado 3500 Classic (2007), Chevrolet Silverado 3500 HD (2007-2013), GMC Sierra 2500 HD (2007-2013), GMC Sierra 3500 Classic (2007), GMC Sierra 3500 HD (2007-2013)	(Electric Shift) 29 Spline Input Gear, 31 Rear Slip, Female Spline Front Output Yoke (Includes Shift Motor)
PG1626-3	24245111; 24257577	MP1626XHD - Chevrolet Silverado 2500 HD (2011-2013), Chevrolet Silverado 3500 HD (2011-2013), GMC Sierra 2500 HD (2011-2013), GMC Sierra 3500 HD (2011-2013)	Electric Shift, 11 Mounting Studs, 29 Spline Input, 33 Rear Slip, 32 Female Spline Front Output, One Sensor Hole
PG1226GM-3	24261510	MP1226XHD - Chevrolet Silverado 2500 HD (2011-2013), Chevrolet Silverado 3500 HD (2011-2013), GMC Sierra 2500 HD (2011-2013), GMC Sierra 3500 HD (2011-2013)	29 Spline Input, 31 Spline Rear Slip Output, 32 Spline Front Output, 11 Mounting holes, 1 Sensor hole, 1 shift indicator above shift lever, w/ 6L90 Transmission, Manual Shift
PG1222-1	12578111; 19125657; 24243013; 24245264; 24245991; 24247212; 24252685; 24261507	MP1222LD - Chevrolet Silverado 1500 (2007-2013), GMC Sierra 1500 (2007-2013), GMC Sierra 1500 Classic (2007)	27 Spline Input, 32 Rear Slip Female Spline Front Output (Manual Shift)
PG3023-2	24237462; 24239189; 24243564; 24247210; 24250805; 24250864; 24250866; 24252679; 24252683; 24253505; 24256217; 24256219; 24256475; 24256476	MP3023LD - Cadillac Escalade (2009), Cadillac Escalade ESV (2009), Cadillac Escalade EXT (2009), Chevrolet Avalanche (2009-2013), Chevrolet Silverado 1500 (2009-2013), Chevrolet Suburban 1500 (2009-2013), Chevrolet Tahoe (2009-2013), GMC Sierra 1500 (2009-2013), GMC Yukon (2008-2013), GMC Yukon XL 1500 (2009-2013)	32 Spline Input, 32 Rear Output, Female Front Output (Electric Shift)
PG3023-2M	24237462; 24239189; 24243564; 24247210; 24250805; 24250864; 24250866; 24252679; 24252683; 24253505; 24256217; 24256219; 24256475; 24256476	MP3023LD - Cadillac Escalade (2009), Cadillac Escalade ESV (2009), Cadillac Escalade EXT (2009), Chevrolet Avalanche (2009-2013), Chevrolet Silverado 1500 (2009-2013), Chevrolet Suburban 1500 (2009-2013), Chevrolet Tahoe (2009-2013), GMC Sierra 1500 (2009-2013), GMC Yukon (2008-2013), GMC Yukon XL 1500 (2009-2013)	32 Spline Input, 32 Rear Output, Female Front Output (Electric Shift) (Includes Shift Motor)
PG1625-1	24244450; 24245992; 24247213; 24250865; 24252686; 12578109	MP1625HD - Chevrolet Silverado 2500 HD (2007-2010), Chevrolet Suburban 2500 (2009-2010), GMC Sierra 2500 HD (2007-2010), GMC Yukon XL 2500 (2009-2010)	29 Spline Input, 31 Rear Female Spline, Front Output (Electric Shift)
PG1625-1M	24244450; 24245992; 24247213; 24250865; 24252686; 12578109	MP1625HD - Chevrolet Silverado 2500 HD (2007-2010), Chevrolet Suburban 2500 (2009-2010), GMC Sierra 2500 HD (2007-2010), GMC Yukon XL 2500 (2009-2010)	29 Spline Input, 31 Rear Female Spline, Front Output (Electric Shift) (Includes Shift Motor)

New Venture 261/263 Case

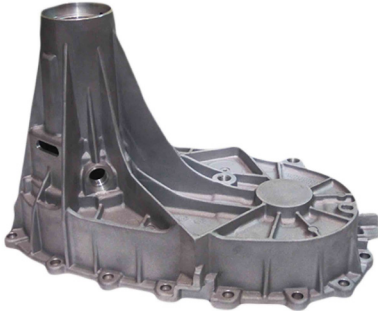


Transfer Case

P/N	OEM REF	Transfer Case	Description
25900		NP261XHD/263XHD	Rear Transfer Case Half
30603/30961		NP149/246/261/263	Rear Transfer Case Half
45544/29231	12384976	NP263HD	Front Transfer Case Half with Ring Gear
30959	12473204	NP261HD	Front Transfer Case Half with Ring Gear
42740 TG	12384969	NP261/263/261HD/263HD	Input Shaft, 32 spline, TOOTH GROUND
43996 TG	12384974	NP261XHD/263XHD	Input Shaft w/BRG, 29 spline, TOOTH GROUND
48714	12384982	NP261/263	Main Shaft, 32 spline, rear output, 49 spline pump
47936	12478082	NP261XHD/263XHD	Main Shaft, 31 spline rear output, 49 spline pump
27718MS-KIT	12473220	NP261/263	Main Shaft w/BRG Sleeve, 34x37x38x32T, 32 spline output, 38 spline pump
48714MS-KIT	12384982	NP261/263	Main Shaft w/BRG Sleeve, 34x37x49x32T, 32 spline output, 49 spline pump
47936MS-KIT	12478082	NP261XHD/263XHD	Main Shaft w/BRG Sleeve, 34x37x49x31T, 31 spline output, 49 spline pump
27721		NP261/263/261XHD/263XHD/271/273	Main Shaft Drive Hub/Bushing, splines into Drive Sprocket
27722		NP261/263/261XHD/263XHD/271/273	Synchro Ring, Mode (inner)
43681	12384962	NP263/263XHD	Range Slider; High/Low Clutch
HV069	12473234	NP261HD/263HD	Transfer Case Chain .375"x1.5"x98p
HV072	12474602	NV149/246/261/263	Transfer Case Chain .375"x1.25"x98P
HV074	12384954	NP261XHD/263XHD	Transfer Case Chain .4346"x1.5"x84P
21966		NP261/263	Sprocket
17833	12544310	NP231/233/241C/241D/241DLD/241DHD/242/247/249/261/261XHD	Fork, Range Aluminum
27756	12473219	NP261/263/261HD/263HD/NP261XHD/263XHD	Fork, Mode Aluminum

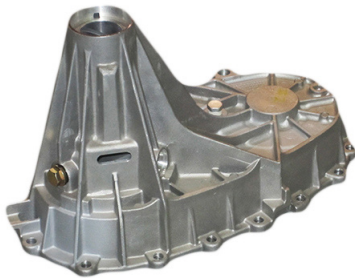
New Venture 261/263 Case

- Original OEM Parts Re-Designed & Strengthened
- Stronger, Harder Aluminum Replaces Original OEM Magnesium



Part #25900
Rear Transfer Case Half
For NP261XHD / 263XHD
OEM Reference #
GM12478092

- Precision gravity aluminum casting
- Precisely machined oil pump seat and aluminum case resolves the “pump rub” issue found on OEM magnesium models



Part #30603/30961
Rear Transfer Case Half
For NP149 /246 /261 /263
OEM Reference #
12473226, 12384976,
12473204, A401760A-2,
411760A-2

- Strengthened ribs add 5mm more material, reinforcing the original OEM cases weakest point
- Dual sensor hole application with plug included for model exhibity
- Each unit is 100% leak tested
- Shipping Weight: 12.5 lbs.

Transfer Case

P/N	OEM REF	Transfer Case	Description
PG261GM-1	12576434; 12579910; 12581005; 12588517; 15039436; 15046964; 15753787; 24228409; 24238189	NV261 LD - Chevrolet Silverado 1500 (1999-2007), GMC Sierra 1500 (1999-2007)	27 Spline Input shaft; Rear Slip Output; Female Spline Output; Manual Shift (Full Assembly)
PG261GM-2	12576436; 12576437; 12579912; 12579913; 12581007; 12581008; 12588519; 12588520; 15023640; 15045471; 15046966; 15709254; 15753789; 24228405; 24228435; 24238191; 24238192; 24238844	NV261 HD - Chevrolet Silverado 1500 (1999-2007), Chevrolet Silverado 2500 HD (2001-2007), Chevrolet Silverado 3500 (2001-2006), Chevrolet Silverado 3500 Classic (2007), Chevrolet Silverado 3500 HD (2007), GMC Sierra 1500 (1999-2007), GMC Sierra 2500 HD (2001-2007), GMC Sierra 3500 (2001-2006), GMC Sierra 3500 Classic (2007), GMC Sierra 3500 HD (2007)	32 Spline Input; Rear Slip Output; Female Spline Output; Manual Shift (Full Assembly)
PG263GM-1	12573382; 24228411; 12575648; 12576352; 12579909; 12581004; 12584758; 12585237; 12588516; 15005450; 15057935; 15772805; 24228417; 24238188; 24238841	NV263 XHD - Chevrolet Silverado 2500 (2001-2004), Chevrolet Silverado 2500 HD (2001-2007), Chevrolet Silverado 3500 (2001-2006), Chevrolet Silverado 3500 Classic (2007), Chevrolet Silverado 3500 HD (2007), GMC Sierra 2500 (2001-2004), GMC Sierra 2500 HD (2001-2007), GMC Sierra 3500 (2001-2006), GMC Sierra 3500 Classic (2007), GMC Sierra 3500 HD (2007)	29 Spline Input; 1.608" Internal Spline Front Output; 31 Spline Rear Slip Output; Electric Shift (Full Assembly)
PG261GM-3	12573381; 12579907; 12581002; 12588514; 15023641; 15772804; 24228406; 24238186; 24238839	NV261 XHD - Chevrolet Silverado 2500 (2001-2004), Chevrolet Silverado 2500 HD (2001-2007), Chevrolet Silverado 3500 (2001-2006), Chevrolet Silverado 3500 Classic (2007), Chevrolet Silverado 3500 HD (2007), GMC Sierra 2500 (2001-2004), GMC Sierra 2500 HD (2001-2007), GMC Sierra 3500 (2001-2006), GMC Sierra 3500 Classic (2007), GMC Sierra 3500 HD (2007)	29 Spline Input; 1.608" Internal Spline Front Output; 31 Spline Rear Slip Output; Manual Shift (Full Assembly)
PG263GM-2	12575647; 12576351; 12576370; 12579582; 12579708; 12579908; 12579915; 12581003; 12581010; 12584757; 12584759; 12585236; 12588515; 15005449; 15057934; 12588104; 12588521; 24228407; 24228416; 24238193; 24228436; 24238187; 24238840	NV263 HD - Chevrolet Silverado 2500 (2001-2004), Chevrolet Silverado 2500 HD (2001-2007), Chevrolet Silverado 3500 (2001-2006), Chevrolet Silverado 3500 Classic (2007), Chevrolet Silverado 3500 HD (2007), GMC Sierra 2500 (2001-2004), GMC Sierra 2500 HD (2001-2007), GMC Sierra 3500 (2001-2006), GMC Sierra 3500 Classic (2007), GMC Sierra 3500 HD (2007)	32 Spline Input; 32 Spline Rear Slip Output; Female Spline Front Output, Electric Shift (Full Assembly)
PG261GM-4	12576435; 12579911; 12581006; 12588518; 15039437; 15046965; 15709260; 15753788; 24228419; 24238190	NV261 LD - Chevrolet Silverado 1500 (1999-2007), Chevrolet Silverado 2500 (1999-2000), GMC Sierra 1500 (1999-2007), GMC Sierra 2500 (1999-2000)	32 Spline Front Input, Rear Slip Output, Female Spline Front Output (Manual Shift) LD (Full Assembly)

New Venture 271/273 Case

Transfer Case

P/N	OEM REF	Transfer Case	Description
44926	5086311AA	NP271D, NP273D	Input Shaft, 29 spline, Inner Bearing Included, Ground Tooth
44924	5096348AA	NP271D, NP273D	Input Shaft, 23 spline, Inner Bearing Included, Ground Tooth
46903/46905		NP271D, NP273D	Front Transfer Case Half
27721		NP261/263/261XHD/263XHD/271/273	Main Shaft Drive Hub/Bushing, splines into Drive Sprocket
HV064	5086328AA	NP271/273	Transfer Case Chain .4346"x1.5"x98P
21966		NP271/273	Sprocket, Drive and Driven
41815	5086352AA	NP271/271D	Range Fork
38304		NP271D/271F/273D/273F	Slider, Range and Hub .368" Wide Fork Groove
PG271D-1	52105646AB; 52105646AC; 52105646AD; 52105646AF	NV271D - Dodge Ram 2500 (2003-2010), Dodge Ram 3500 (2003-2005,2007-2010), Ram 2500 (2011), Ram 3500 (2011)	23 Spline 0.84" Exposed Front Input, 34 Spline Rear Slip Output, W/out speedo hole, Manual Shift, 5 Position Switch Indicator (Full Assembly)
PG271D-2	52105649AB, 52105649AC, 52105649AD, 52105649AE, 52105649AF	NV271D - Dodge Ram 2500 (2005-2010), Dodge Ram 3500 (2003-2010), Ram 2500 (2011-2012), Ram 3500 (2011-2012)	29 Spline 1.55" Exposed Input, 34 Spline Slip Yoke Style Rear Output, W/out Speedo Hole, 5 Position Shift Indicator Switch, Manual Shift (Full Assembly)
PG271D-3	52853060AB, 52853060AC, 52853060AD, 52853060AE; Hollander#412-528A	NV271D - Dodge Ram 2500 (2004-2010), Dodge Ram 3500 (2004-2008), Ram 2500 (2011)	23 Spline 0.84" Exposed Front Input, 34 Spline Rear Slip Output, W/out Speedo Hole, 2 Wire Shift Indicator Switch, Manual Shift (Full Assembly)
PG271D-4	52853061AB; 52853061AC; 52853061AD; 52853061AE; 52853061AF; Hollander#412-527A	NV271D - Dodge Ram 2500 (2004-2010), Dodge Ram 3500 (2004-2011)	29 Spline 1.55" Exposed Input; 34 Spline Rear Slip Output, W/out Speedo Hole, 2 Wire Shift Indicator Switch, Manual Shift (Full Assembly)
PG273D-1	52123025AA; 52123025AB; 52123025AD; Hollander#412-616	NV273D - Dodge Ram 2500 (2006-2010), Dodge Ram 3500 (2006-2010), Ram 2500 (2011-2012), Ram 3500 (2011-2012)	29 Spline 1.55" Exposed Input, 34 Spline Rear Slip Output, W/out Speedo Hole, Electric Shift, Splined Shift Shaft (Full Assembly)
PG271D-5	52123155AA; Hollander#412-619, 412-620	NV271D - Dodge Ram 3500 (2007-2012), Dodge Ram 4500 (2011-2012), Dodge Ram 5500 (2011-2012)	29 Spline 1.55" Exposed Input, 34 Spline Rear Output, Bolt on Rear Output Yoke, W/out Speedo Hole, 5 Position Shift Indicator Switch, Manual Shift (Full Assembly)
PG273D-2	52105650AB; 52105650AC; 52105650AD; 52105650AE; 52105650AF	NV273D - Dodge Ram 2500 (2003-2005), Dodge Ram 3500 (2003-2005)	23 Spline Input, Rear Slip Output 34 Spline w/o Speedo Hole, Electric Shift .840 Exposed Input (Full Assembly)
PG273D-3	52105650AB; 52105650AC; 52105650AD; 52105650AE; 52105650AF	NV273D - Dodge Ram 2500 (2003-2005), Dodge Ram 3500 (2003-2005)	23 Spline Input, Rear Slip Output 34 Spline w/o Speedo Hole, Electric Shift .840 Exposed Input (Includes Shift Motor) (Full Assembly)
PG273D-4	52105651AB; 52105651AC; 52105651AD; 52105651AE; 52105651AF	NV273D - Dodge Ram 2500 (2003-2005), Dodge Ram 3500 (2003-2005)	29 Spline Front Input, Rear Slip Output 34 Spline w/o Speedo Hole, Electric Shift 1.550 Exposed Input (Full Assembly)
PG273D-5	52123024AB	NV273D - Dodge Ram 1500 (2006-2008), Dodge Ram 2500 (2006-2010), Dodge Ram 3500 (2006-2010), Ram 2500 (2011), Ram 3500 (2011)	23 Spline Input, 34 Spline Rear Slip Output, w/o Speedo Hole, .840 Exposed Input, (Electric Shift), Splined Shift Sector (Full Assembly)
PG271F-1	1C34-HA; 4C34-HD; F81A-HB	NP271F - Ford F-250 Super Duty (2003-2004), Ford F-350 Super Duty (1999-2002), Ford F-450 Super Duty (2003)	31 Spline Front Input Shaft Super Duty (Manual Shift), Auto Trans. w/o Speedo Hole New Process (Full Assembly)
PG271F-2	1C34-KA; F81A-KC	NP271F - Ford F-250 Super Duty (1999-2004), Ford F-350 Super Duty (1999-2004)	24 Spline Front Input Shaft Super Duty (Manual Shift) 6 Speed Manual Trans., w/o Speedo Hole New Process (Full Assembly)
PG271F-1	F81A-KC; 3C34-BA; 4C34-BA; 4C34-BD; 5C34-BA; 5C34-BC; 5C34-BF; 6C34-BA; 7C34-G; 5C34-BH	NV271 - Ford F-250 Super Duty (2003-2010), Ford F-350 Super Duty (2003-2010)	34 Spline Front Input Shaft Manual Shift, 5 Speed Auto, ZF, w/o Speedo Hole, Front & Rear Flange (Full Assembly)
PG271F-2	7C34-BA; 7C34-BB; 7C34-BD; 7C34-BE	NV271 - Ford F-250 Super Duty (2007), Ford F-350 Super Duty (2007)	34 Spline Front Input Shaft Manual Shift, 5 Speed Auto, ZF, w/o Speedo Hole, w/3 Mounting Holes on Rear Extension Housing, Front & Rear Flange (Full Assembly)
PG273F-1	1C34-JA; 4C34-JC; 5C34-JE; 5C34-JF; 5C34-SE; F81A-JD	NP273F - Ford Excursion (2000-2005), Ford F-250 Super Duty (1999-2004), Ford F-350 Super Duty (1999-2004), Ford F-450 Super Duty (1999-2003), Ford F-550 Super Duty (1999-2003)	31 Spline Front Input Shaft Super Duty, (Electric Shift) Auto Trans. or 5 Speed Manual Trans., w/o Speedo Hole, New Process, Front & Rear Flange (Full Assembly)
PG273D-6	52123024AB	NV273D - Dodge Ram 1500 (2006-2008), Dodge Ram 2500 (2006-2010), Dodge Ram 3500 (2006-2010), Ram 2500 (2011), Ram 3500 (2011)	23 Spline Input, 34 Spline Rear Slip Output, w/o Speedo Hole, .840 Exposed Input, (Electric Shift), Splined Shift Sector (Includes Shift Motor) (Full Assembly)
PG273D-7	52123018AA; 52123156AA	NV273D - Dodge Ram 3500 (2007-2010), Ram 3500 (2011-2012)	29 Spline Input Gear, Rear Output Flange, w/o Speedo Hole, Electric Shift (Cab & Chassis) (Full Assembly)
PG271F-2	3C34-AA; 4C34-AA; 4C34-AB; 4C34-AD; 5C34-AA; 5C34-AB; 5C34-AF; 5C34-; 6C34-AA; P3C34-AA	NP273F - Ford Excursion (2003-2005), Ford F-250 Super Duty (2003-2010), Ford F-350 Super Duty (2003-2010)	34 Spline Input Gear Super Duty (Electric Shift) w/o Speedo Hole, 5 Speed Auto, ZF, Front & Rear Flange (Full Assembly)
PG271F-3	7C34-AA; 7C34-AB; 7C34-AD; 7C34-CB; 7C34-CD	NP273F - Ford F-250 Super Duty (2007-2010), Ford F-350 Super Duty (2007-2010)	34 Spline Front Input Shaft, Super Duty (Electric Shift) w/o Speedo Hole, 5 Speed Auto ZF, w/ 3 Mounting Holes on Rear Extension Housing, Front & Rear Flange (Full Assembly)

New Venture 246 Case

P/N	OEM REF	Transfer Case	Description
30603/30961		NP149/246/261/263	Rear Transfer Case Half
19019	12547998	NP136/241C/243/246	Input Shaft, 32 spline, '95-Up, Narrow Bearing
HV072	12474602	NV149/246/261/263	Transfer Case Chain .375"x1.25"x98P
40966	88996468	NP246/246D	Apply Fork, '03-Up
17982	12386242	NP136/233/236/243/246	Slider, Range and Hub .318" Wide Fork Groove
PG246GM-1	12572904; 12575125; 15007093; 15017351; 15017912; 15017942; 15037093; 15037351; 15039438; 15753790; 15761465; 15769438; 12575125; 15052506; 24228404; 24228410	NV246D - Chevrolet Avalanche 1500 (2002), Chevrolet K1500 Suburban (1999), Chevrolet Silverado 1500 (1999-2002), Chevrolet Silverado 2500 (1999-2002), Chevrolet Suburban 1500 (2000-2002), Chevrolet Tahoe (1999-2002), GMC Sierra 1500 (1999-2002), GMC Sierra 1500 HD (2001-2002), GMC Sierra 2500 (1999-2002), GMC Yukon (1998-2002), GMC Yukon XL 1500 (2000-2002)	27 Spline Input; Internal Spline Front Output; Electric Shift (Full Assembly)
PG246GM-2	12572905; 15007094; 15017913; 15034939; 15037352; 15039439; 15753791; 15772806; 24228403; 24228415	NV246C - Chevrolet Avalanche 2500 (2002), Chevrolet Silverado 1500 (1999-2002), Chevrolet Silverado 2500 (1999-2002), Chevrolet Silverado 3500 (2001-2002), Chevrolet Suburban 2500 (2000-2002), Chevrolet Tahoe (1998-1999), GMC Sierra 1500 (1999-2002), GMC Sierra 1500 HD (2001-2002), GMC Sierra 2500 (1999-2002), GMC Sierra 3500 (2001-2002), GMC Yukon XL 2500 (2000-2002)	32 Spline Input; Internal Spline Front Output; Electric Shift (Oval Shift Selector) (Full Assembly)
PG246GM-3	12577834; 12578116; 12580184; 12580859; 12584880; 12585239; 12586466; 24228420; 24233725; 24237189; 24237286; 24238532; 24239524; 24240015	NV246D - Chevrolet Avalanche (2007), Chevrolet Avalanche 1500 (2003-2006), Chevrolet Silverado 1500 (2003-2007), Chevrolet Suburban 1500 (2003-2007), Chevrolet Tahoe (2003-2007), GMC Sierra 1500 (2003-2007), GMC Sierra 1500 HD (2003,2005-2006), GMC Yukon (2003-2007), GMC Yukon XL 1500 (2003-2007)	27 Spline Input; Rear Slip Output; Female Internal Splined Front Output; Splined Shift Shaft (Full Assembly)
PG246GM-3-M	12577834; 12578116; 12580184; 12580859; 12584880; 12585239; 12586466; 24228420; 24233725; 24237189; 24237286; 24238532; 24239524; 24240015	NV246D - Chevrolet Avalanche (2007), Chevrolet Avalanche 1500 (2003-2006), Chevrolet Silverado 1500 (2003-2007), Chevrolet Suburban 1500 (2003-2007), Chevrolet Tahoe (2003-2007), GMC Sierra 1500 (2003-2007), GMC Sierra 1500 HD (2003,2005-2006), GMC Yukon (2003-2007), GMC Yukon XL 1500 (2003-2007)	27 Spline Input; Rear Slip Output; Female Internal Splined Front Output; Splined Shift Shaft (Includes Shift Motor) (Full Assembly)
PG246GM-4	12575942; 12577835; 12580185; 12580860; 12584881; 12585240; 12586467; 24228439; 24233726; 24237190; 24237288; 24238533; 24238848; 24239525; 24240016	NV246D - Chevrolet Avalanche 2500 (2003-2006), Chevrolet Silverado 1500 (2003-2007), Chevrolet Silverado 2500 (2003-2004), Chevrolet Suburban 2500 (2003-2007), GMC Sierra 1500 (2003-2007), GMC Sierra 1500 HD (2003,2005-2006), GMC Sierra 2500 (2003-2004), GMC Yukon XL 2500 (2003-2007)	32 Spline Input; Rear Slip Output; Internal Splined Front Output; Splined Shift Shaft (Full Assembly)
PG246GM-1-M	12572904; 12575125; 15007093; 15017351; 15017912; 15017942; 15037093; 15037351; 15039438; 15052506; 15709322; 15753790; 15761465; 15769438; 24228404; 24228410	NV246D - Chevrolet Avalanche 1500 (2002), Chevrolet K1500 Suburban (1999), Chevrolet Silverado 1500 (1999-2002), Chevrolet Silverado 2500 (1999-2002), Chevrolet Suburban 1500 (2000-2002), Chevrolet Tahoe (1999-2002), GMC Sierra 1500 (1999-2002), GMC Sierra 1500 HD (2001-2002), GMC Sierra 2500 (1999-2002), GMC Yukon (1998-2002), GMC Yukon XL 1500 (2000-2002)	27 Spline Front Input, Rear Slip Female Spline Front Output; AWD (Includes Shift Motor) (Full Assembly)
PG246GM-2-M	12572905; 15007094; 15017913; 15034939; 15037352; 15039439; 15753791; 15772806; 24228403; 24228415	NV246D - Chevrolet Avalanche 2500 (2002), Chevrolet Silverado 1500 (1999-2002), Chevrolet Silverado 2500 (1999-2002), Chevrolet Silverado 3500 (2001-2002), Chevrolet Suburban 2500 (2000-2002), Chevrolet Tahoe (1998-1999), GMC Sierra 1500 (1999-2002), GMC Sierra 1500 HD (2001-2002), GMC Sierra 2500 (1999-2002), GMC Sierra 3500 (2001-2002), GMC Yukon XL 2500 (2000-2002)	32 Spline Input Shaft, Rear Slip Output, Female Front Output, Oval Shift Sector (Full Assembly)
PG246GM-4-M	12575942; 12577835; 12580185; 12580860; 12584881; 12585240; 12586467; 24228439; 24233726; 24237190; 24237288; 24238533; 24238848; 24239525; 24240016	NV246D - Chevrolet Avalanche 2500 (2003-2006), Chevrolet Silverado 1500 (2003-2007), Chevrolet Silverado 2500 (2003-2004), Chevrolet Suburban 2500 (2003-2007), GMC Sierra 1500 (2003-2007), GMC Sierra 1500 HD (2003,2005-2006), GMC Sierra 2500 (2003-2004), GMC Yukon XL 2500 (2003-2007)	32 Spline Input Shaft, Rear Slip Output, Female Front Output, Splined Shift Sector (Includes Shift Motor) (Full Assembly)

Transfer Case Components

Transfer Case NP 243

P/N	OEM REF	Transfer Case	Description
19019	12547998	NP136/241C/243/246	Input Shaft, 32 spline, '95-Up, Narrow Bearing
17982	12386242	NP136/233/236/243/246	Slider, Range and Hub .318" Wide Fork Groove

Transfer Case NP 241

P/N	OEM REF	Transfer Case	Description
17954	15635194	NP241D/241DHD	Input Shaft, 29 Spline, 5" Length. 24MM Bearing
19019	12547998	NP136/241C/243/246	Input Shaft, 32 spline, '95-Up, Narrow Bearing
17954		NP241D/241DHD	Input Shaft w/BRG, 29 spline, 24 MM Thick Bearing, Ground Tooth
HV072	12474602	NV149/246/261/263	Transfer Case Chain .375"x1.25"x98P
17813	4746142	NP241/NP241DHD	Sprocket, Drive
17833	12544310	NP231/233/241C/241D/241DLD/241DHD/242/247/249/261/261XHD	Fork, Range Aluminum
19114	12547458	NP231/233/241C/241D	Slider, Range and Hub '88-Up

Transfer Case NP 231/233

P/N	OEM REF	Transfer Case	Description
17191	15636629	NP231C	Input Shaft, 27 spline, '88-'94, Wide Bearing
17978	12548147	NP231/233C	Input Shaft, 27spline, '95-Up, Narrow Bearing
17833	12544310	NP231/233/241C/241D/241DLD/241DHD/242/247/249/261/261XHD	Fork, Range Aluminum
19114	12547458	NP231/233/241C/241D	Slider, Range and Hub '88-Up
17982	12386242	NP136/233/236/243/246	Slider, Range and Hub .318" Wide Fork Groove
HV022		NV207/231C/233C/231HD/233HD; BW1350 /1354	Transfer Case Chain .5033"x1.25"x62P Chain
HV077		NV231/231C/233C/231D/233 Electric; BW1354	Transfer Case Chain .5033"x1"x62P Chain

Transfer Case NP 149

P/N	OEM REF	Transfer Case	Description
38704	12478151	NP149	Input Shaft



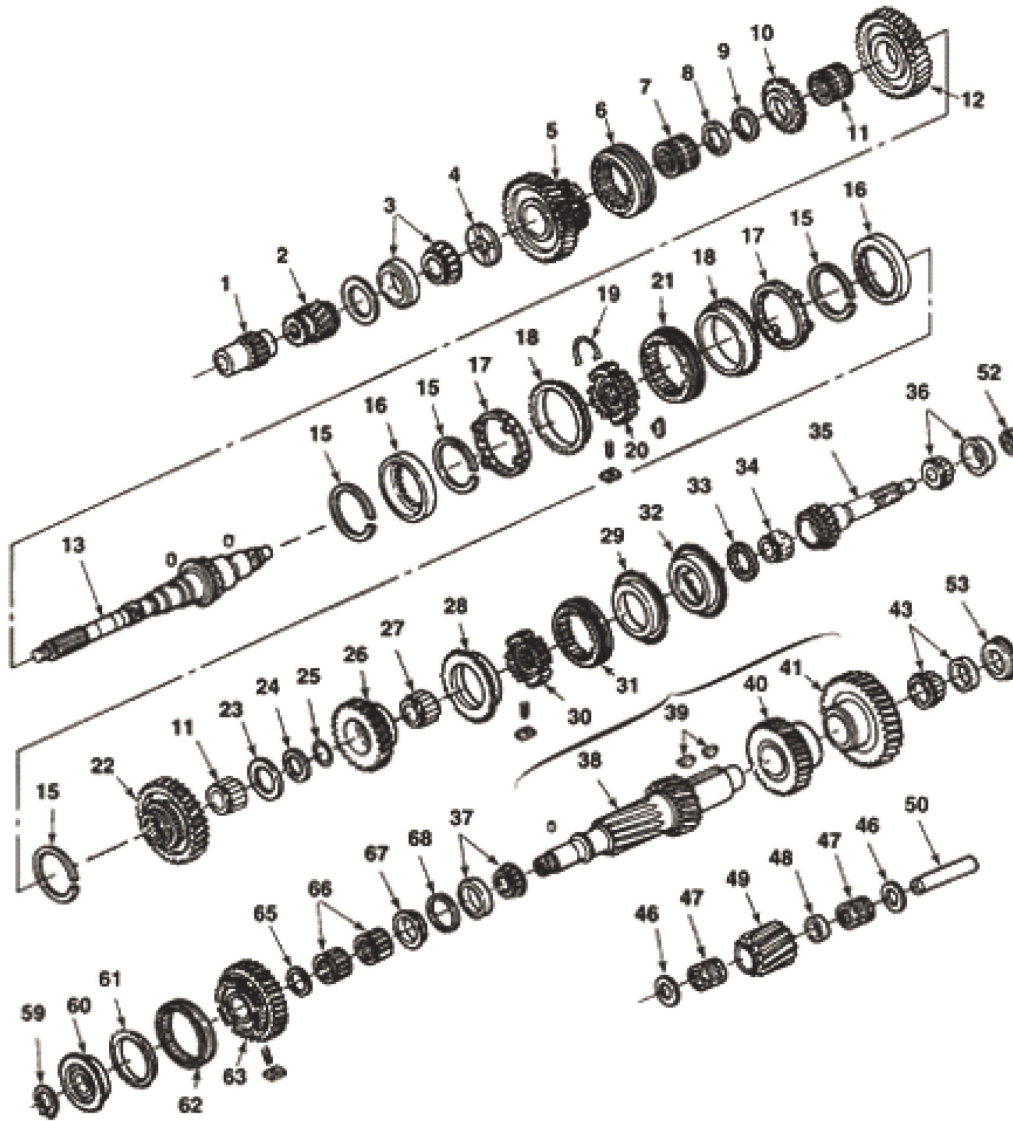
Transfer Case Bearing and Seal Rebuild Kits

P/N	Description	Application
70-231TC	Transfer Case Rebuild Kit	DODGE: RAM 1500 97-01; DAKOTA 94-00; DURANGO 98-00
70-231EETC	Transfer Case Rebuild Kit	DODGE: RAM 1500 97-01; DAKOTA 94-00; DURANGO 98-00
70-241TC	Transfer Case Rebuild Kit	CHEVROLET: BLAZER 89-94; K1500 88-94; K2500 88-94; K3500 88-91; V1500/3500 89-91 DODGE: 1500/2500/3500 1994 GMC: K1500 92-94; K2500 92-94; K3500 88-91; V2500 89-91; V3500 88-91; YUKON 92-94
70-241BBTC	Transfer Case Rebuild Kit	CHEVROLET: K1500 91-99; K2500 91-99; SILVERADO 1500/2500 1999 DODGE: 1500/2500/3500 95-96 GMC: K1500 1999; K2500 1999; K3500 88-91; SIERRA 1500/2500 1999; YUKON 94-97
70-241DDTC	Transfer Case Rebuild Kit	DODGE: RAM 1500 00-05; 2500 00-02; 3500 00-02
70-241FFTC	Transfer Case Rebuild Kit	DODGE: RAM 1500 97-99; 2500 97-99; 3500 97-99
70-246TC	Transfer Case Rebuild Kit	CHEVROLET: AVALANCHE 07; AVALANCHE 1500/2500 02-06; K1500 98-99; K2500 98-00 CHEVROLET: SILVERADO 1500 01-03; SILVERADO 1500 HD 01-03 & 05-06; CHEVROLET: SILVERADO 2500 99-04; SILVERADO 2500 HD 01-07 CHEVROLET: SUBURBAN 1500/2500 00-07; TAHOE 98-07 GMC: K1500 1999; K1500 SUBURBAN 98-99; K2500 99-00; K2500 SUBURBAN 98-99 K3500 88-91; V2500 89-91; V3500 88-91; YUKON 92-94 GMC: SIERRA 1500 99-07; SIERRA 1500 HD 01-03 & 05-06; SIERRA 2500 99-04; SIERRA 2500 HD 01-07; GMC: YUKON 98-07; YUKON XL 1500 00-07; YUKON XL 2500 00-07
70-261TC	Transfer Case Rebuild Kit	CHEVROLET: K1500 1999; K2500 99-00; SILVERADO 1500 99-07; SILVERADO 1500 HD 01-03 & 05-06 CHEVROLET: SILVERADO 2500 99-00; SILVERADO 2500 HD 01-06 GMC: K1500 1999; K2500 99-00; SIERRA 1500 99-07; SIERRA 1500 HD 01-03 & 05-06; SIERRA 2500 99-00; SIERRA 2500 HD 01-06
70-261AATC	Transfer Case Rebuild Kit	CHEVROLET: K2500 99-00; SILVERADO 1500 01-07; SILVERADO 1500 HD 01-03 & 05-06 CHEVROLET: SILVERADO 2500 99-04; SILVERADO 2500 HD 01-07; SILVERADO 3500 01-06; SILVERADO 3500 HD 2007 GMC: K2500 99-00; SIERRA 1500 01-07; SIERRA 1500 HD 01-03 & 05-06; SIERRA 2500 99-04; SIERRA 2500 HD 01-07; GMC: SIERRA 3500 01-06; SIERRA 3500 HD 2007
70-261BBTC	Transfer Case Rebuild Kit	CHEVROLET: SILVERADO 2500 01-04; SILVERADO 2500 HD 01-07; SILVERADO 3500 01-06; SILVERADO 3500 HD 2007 GMC: SIERRA 2500 01-04; SIERRA 2500 HD 01-07; SIERRA 3500 01-06; SIERRA 3500 HD 2007
70-271TC	Transfer Case Rebuild Kit	FORD: EXCURSION 00-05; F250 1999; F250 SUPER DUTY 99-10; F350 SUPER DUTY 99-10
70-271AATC	Transfer Case Rebuild Kit	DODGE: RAM 2500 03-07; RAM 3500 03-07
70-1356TC	Transfer Case Rebuild Kit	FORD: F150 87-97; F250 87-97; F350 87-97; BRONCO 87-96 CHEVROLET: K3500 89-00; V3599 89-91 GMC: K3500 89-91; V3500 89-91
70-4406TC	Transfer Case Rebuild Kit	FORD: F150 96-08; F250 96-99; EXCURSION 97-02 LINCOLN: NAVIGATOR 98-02; MARK LT 06-08
70-1222	Transfer Case Rebuild Kit	GM Magna Power 1222, 1st Design Application Years 2007-2011
70-1225	Transfer Case Rebuild Kit	GM Magna Power 1225/1226; 1st Design Application Years 2007-2011
70-1225L	Transfer Case Rebuild Kit	GM Magna Power 1225/1226; 2nd Design Application Years 2012-2016
70-1625	Transfer Case Rebuild Kit	GM Magna Power 1625/1626; 1st Design Application Years 2007-2011
70-1625L	Transfer Case Rebuild Kit	GM Magna Power 1625/1626; 2nd Design Application Years 2012-2016
70-3023	Transfer Case Rebuild Kit	GM Magna Power 3023; 1st Design Application Years 2007-2011
70-3023L	Transfer Case Rebuild Kit	GM Magna Power 3023; 2nd Design Application Years 2012-2016
70-3024	Transfer Case Rebuild Kit	GM Magna Power 3024; 1st Design Application Years 2007-2011

Transfer Case

NV 4500 Transmission

Transmission



The NV4500 is a 5-Speed transmission found in Chevy/GM and Dodge trucks. This transmission has an 6.34 Ratio 1st gear on earlier versions and 5.61 Ratio on later versions.

P/N	OEM REF	Description	Reference
18161		Front Bearing Retainer, Fits 1 1/4" Input Shaft, 1994-04 Dodge	
18161D		Front Bearing Retainer, Fits 1 3/8" Input Shaft, 1994-04 Dodge	
18347	4741542	Front Bearing Retainer, 10 splines, Gas Models Only	
20018	12548483	Input Shaft, 22T, 10 splines, 1995-07 GM, 5.61 Ratio	35
25356	4882358/18160	Input Shaft, 1 1/4", 22T, 10 Spline, 1994-04 Dodge (18160)	35
25356D		Input Shaft, 1 3/8", 22T, 10 Spline, 1994-04 Dodge	35

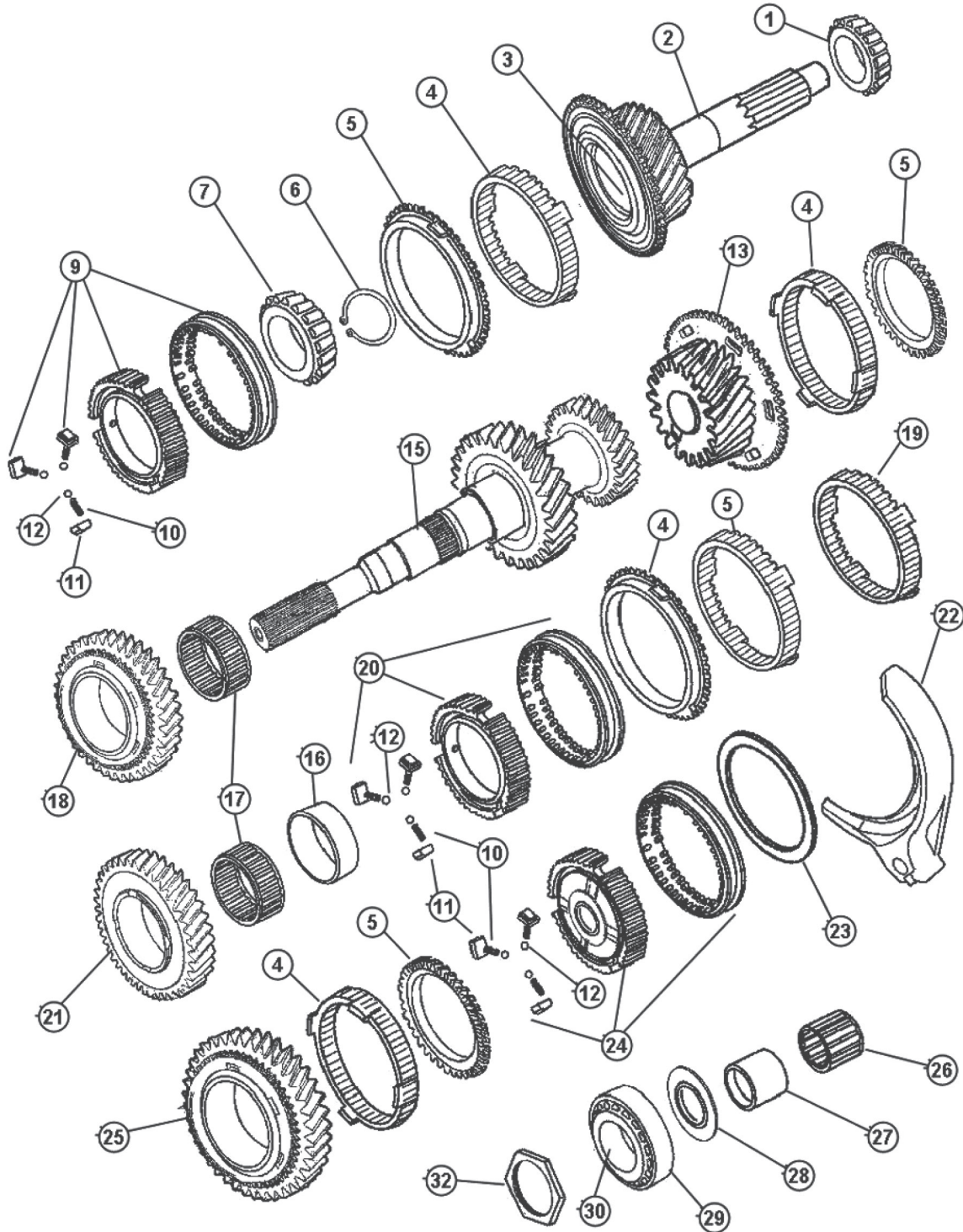
NV 4500 Transmission

4882358D		Input Shaft, 1 3/8", 22T, Long Spline, Dodge Diesel	35
25354	4741540	Input Shaft, 1 1/8", 22T, 10 splines, 1994-05 Dodge Gas	35
25330	12546682/12382817	Main Shaft, 20.25", 35 splines, Fits 1991-07 GM 4x2 without E-Brake	13
25331	15637464	Main Shaft, 24 9/16", 32 splines, Fits 1991-99 GM 4x2 without E-Brake	13
25332	15637272	Main Shaft, 25.5", 35 splines, Fits 1991-00 GM 4x2 with E-Brake	13
27170	15637996/12382816	Main Shaft 19.75", 32 splines, Fits 1991-07 GM 4x4	13
27171	4637711	Main Shaft, 17.5", 23 splines, Fits 1992-01 Dodge 4x4 V8 Gas Models only	13
27173L	4882318K	Main Shaft, 17.75", 29 spline, Fits 1994-05 Dodge without Drop Washer Kit	13
4741468K		Main Shaft, 31 splines, Fits 1994-05 Dodge 4x2 with Drop Washer Kit	13
4882318K		Main Shaft, 17.75", 29 spline, Fits 1994-05 Dodge with Drop Washer Kit	13
27133		Main Shaft Kit (Includes screws, nut, washer, caps)	
17293	15637281/4637730	2nd Gear Main Shaft, 37T	22
18918	2548480/4773011	3rd Gear Main Shaft, 29T, with 5.61 Ratio 1st Gear	26
18922	12542867	3rd Gear Main Shaft, 28T, with 6.34 Ratio 1st Gear	26
16799	15635278	5th Gear OD, Main Shaft, 19T, with 6.34 Ratio 1st Gear	2
16999	12548339	5th Gear OD, Main Shaft, 22T, with 5.61 Ratio 1st Gear	2
18164	4741551	5th Gear OD, Main Shaft, 22T	2
17500	12542902	Countershaft, Fits 6.34 Ratio 1st Gear	38
22608	12382796	Counter Shaft, 39T, Fits 1992-06 GM/Dodge with 5.61 Ratio 1st Gear	38
22657		Counter Shaft, 35T, Fits GM/Dodge 1997-07 with 5.61 Ratio 1st Gear	38
17330	4637703	3rd Gear Counter Shaft, 30T, Fits GM/Dodge with 5.61 Ratio 1st Gear	40
17318	12548338/4637786	5th Gear Counter Shaft, 51T, Fits GM/Dodge with 5.61 Ratio 1st Gear	63
17271	15637268	4th Gear Counter Shaft, 39T, Fits 1991-94 GM with 6.34 Ratio 1st Gear	41
18920	12547203	Reverse Drive Clutch Gear, GM	5
18923	4723009	Reverse Gear Clutch Cone, Dodge	5
21313	12386535	4th Gear Input Clutch Cone	32
17284	15637274/4637719	1-2 Outer Synchro Ring, Brass	75
17298	15637286/4637739	3-4 Synchro Ring, Brass	28/29
17307	15637298/4637792	5th / Reverse Synchro Ring	61
26705	4773018	Rear Retainer (Extension Housing) Fits 1994-05 Dodge 4x4	



NV 5600 Transmission

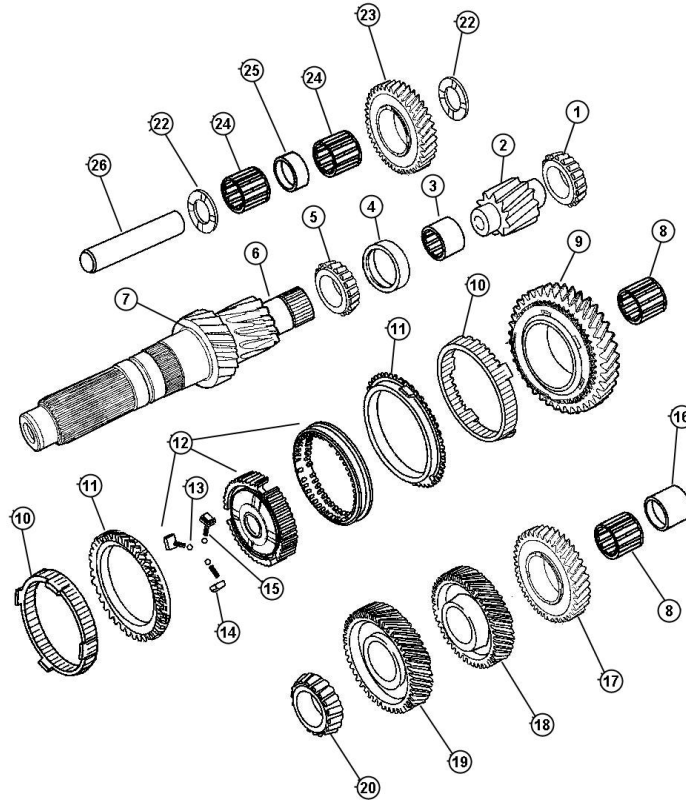
Figure 1



Transmission

NV5600 Transmission

Figure 2



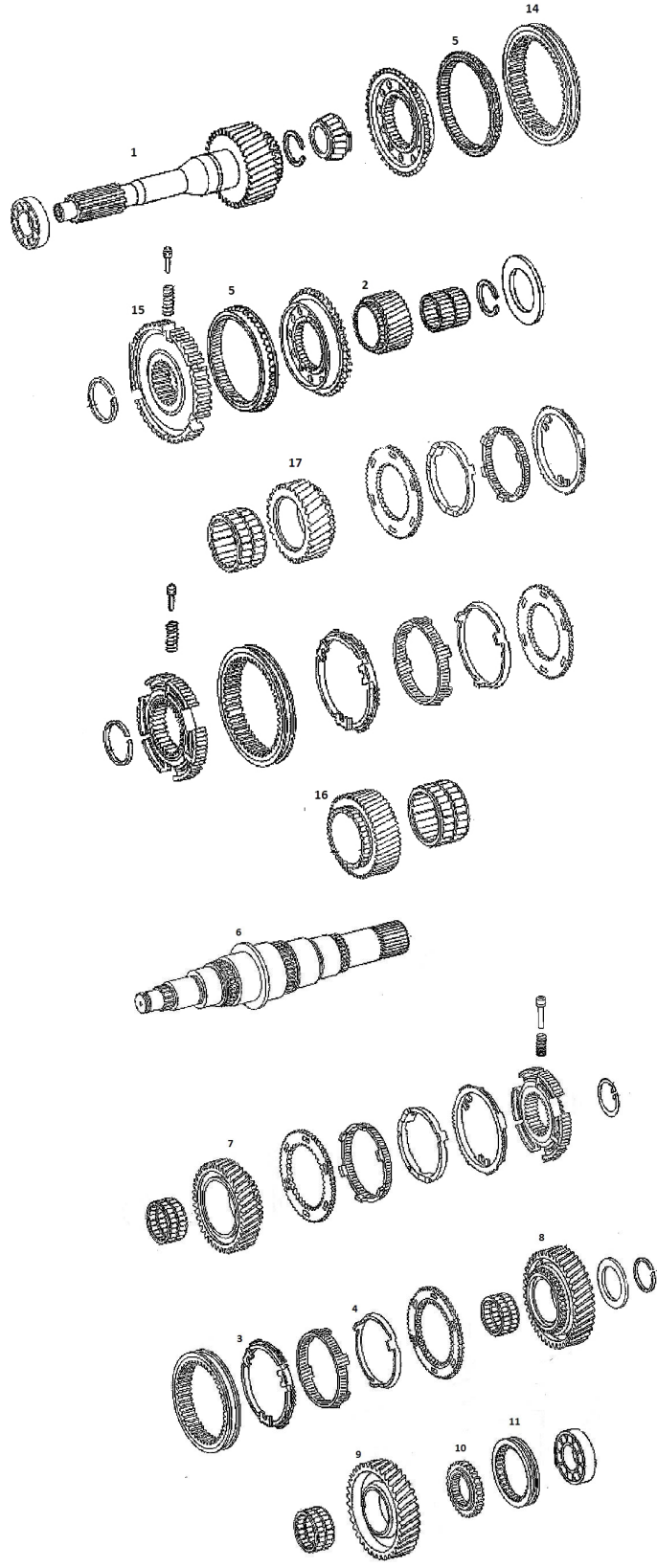
The NV5600 is a 6-Speed manual transmission with a cast iron case. This transmission is used with Dodge trucks from 1999-2005.

P/N	OEM REF	Description	Reference
22748	05066026AA	Input Shaft w/ 5th Gear, 26T	F1, 2
26221	05010050AA	Main Shaft, 4x4, 29T-33T 29 splines	F1, 15
26222	05010049AA	Main Shaft, 4x2, 29T-33T 31 splines	F1, 15
26166	05010066AA	Counter Shaft	F2, 7
22784	05019907AA	1st Gear, Main Shaft, 39T	F1, 21
22770	05019906AA	2nd Gear, Main Shaft, 39T	F1, 18
22756	05019885AA	6th Gear, Main Shaft, 24T	F1, 13
22886	5012130AA	Reverse Gear, Main Shaft, 39T	F1, 25
22794	05019909AA	3rd Gear, Counter Shaft, 28T	F2, 9
22803	05019904AA	4th Gear, Counter Shaft, 36T	F2, 17
26164	05010073AA	5th Gear, Counter Shaft, 45T	F2, 19
26165	05010074AA	6th Gear, Counter Shaft, 57T	F2, 18
22760	44548	1-6 Reverse Middle Synchro Ring	F1, 4
22800	68032687AA	3-4 Synchro Hub	F1, 12
22765	68032688AA	5-6 Synchro Hub	F1, 9
22881	68032689AA	Reverse Synchro Hub	F1, 24

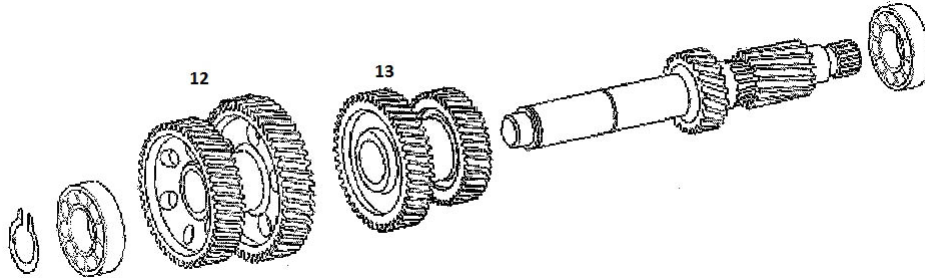
Transmission

G56 Transmission

Transmission



G56 Transmission



The G56 is a 6-Speed manual transmission introduced in 2005 and in production through 2018, replacing the NV5600 transmission.

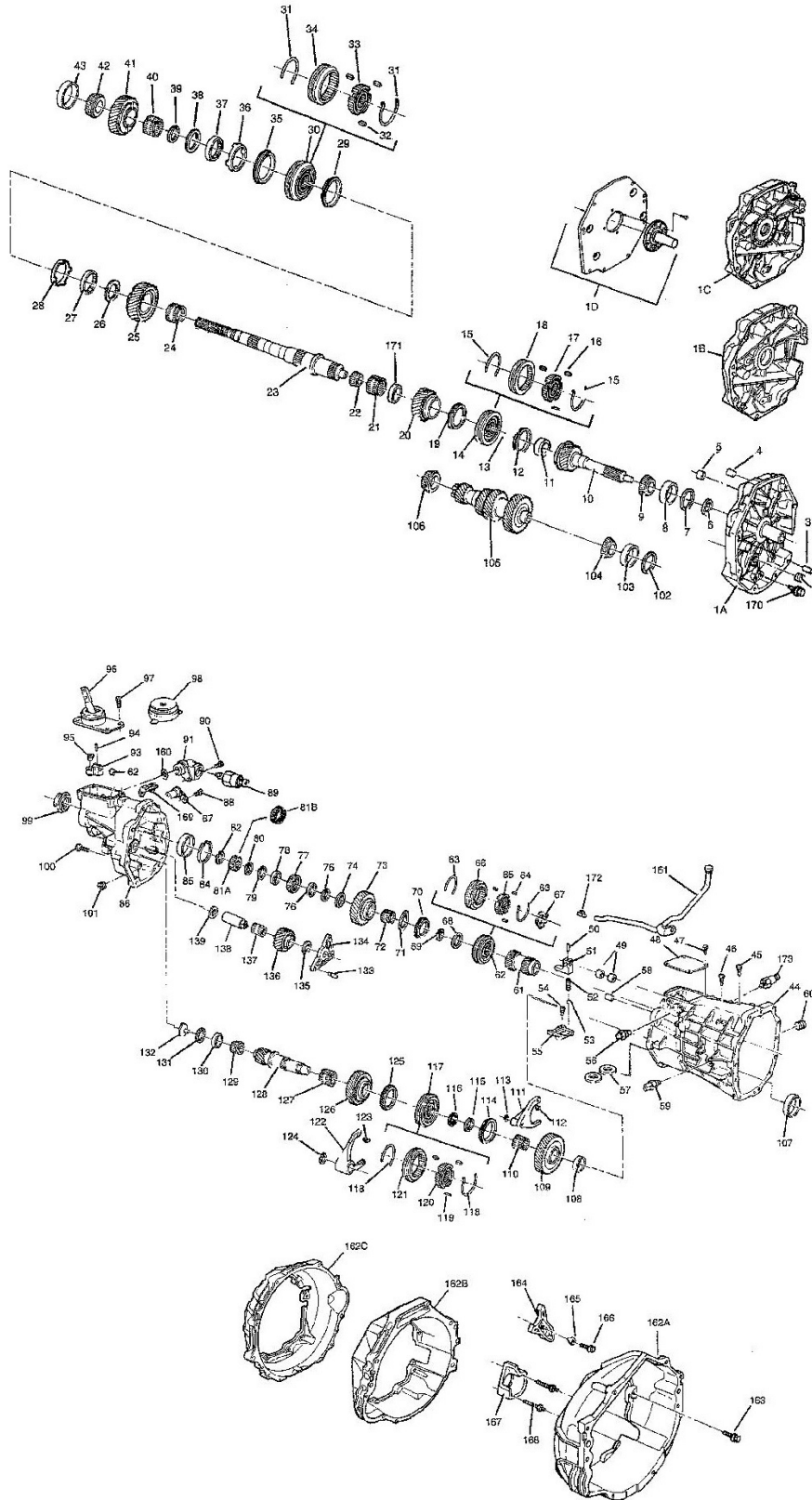
It has a lighter aluminum case, in contrast to the cast iron case in the previous NV5600 transmission.

P/N	OEM REF	DESCRIPTION	Reference
G56-6	05142733AA	Front Bearing Retainer	
G56-16	5142821AA	Input Shaft, 27 Teeth, <i>Ground Tooth</i> , Fits 5.9L Diesel Engine	1
G56-16A	68054603AA	Input Shaft, 28 Teeth, <i>Ground Tooth</i> , Fits 6.7L Diesel Engine	1
G56-2	05191985AA	Main Shaft, Fits Both 4x4 and 4x2, '05-Up DODGE RAM 2500, 3500, 4500, 5500	6
G56-12	05142829AA	1st Gear, Main Shaft, 46 Teeth	7
G56-21	05142824AA	2nd Gear, Main Shaft, 43 Teeth	8
G56-11	05142836AA	3rd Gear, Main Shaft, 33 Teeth	16
G56-19	05142841AA	4th Gear, Main Shaft, 28 Teeth; <i>Ground Tooth</i>	17
G56-18		6th Gear, Main Shaft, 23 Teeth	2
G56-36		Reverse Gear, Main Shaft 42 Teeth, <i>Ground Tooth</i>	9
G56-34		3rd-4th Gear, Countershaft, 36-28 Teeth	13
G56-9		5-6 Gear, Counter Shaft, 48-52 Teeth, Fits 5.9L Diesel Engine	12
G56-9A		5-6 Gear, Counter Shaft, 47-52 Teeth, Fits 6.7L Diesel Engine	12
G56-14AI		1-2nd Synchronizer Ring (Inner)	4
G56-14AO		1-2nd Synchronizer Ring (Outer)	3
G56-14		5th-6th Synchronizer Ring	5
G56-14AM		1-2nd Synchronizer Ring (Middle) Original Equipment Friction Ring	
G56-14BC		3-4th Synchronizer Ring (Middle) Original Equipment Friction Ring	
G56-50		5-6th Synchro Hub & Slider, REM SUPERFINISHED	14 & 15
G56-40		Reverse Synchro Hub & Slider, REM SUPERFINISHED	10 & 11
G56-86		Shift Boot, Rubber	



TREMEC T56 Transmission

Transmission

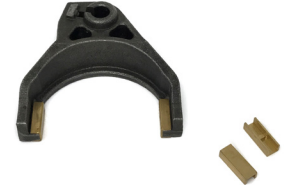


TREMEC T56 Transmission



The Tremec T-56 is a 6-speed manual transmission used in many GM, Dodge and Ford applications.

REM Superfinishing increases efficiency and resolves wear resistance problems.



P/N	OEM REF	DESCRIPTION	Reference
1386-585-010RSF	1386-585-010	Input Shaft, 31 Teeth, 26 Spline GM F-Body, LS1 Engine, REM Superfinished	10
T0115-03-6132	TUFM6132	Input Shaft, 31 Teeth, 2003-'04 Ford Cobra, 26 Splines, REM Superfinished	10
1386-171-003	1386-171-003	Main Shaft, 27 Splines, '93-'02 F-BODY, LS1/LT1 Engine	23
1386-081-007RSF	1386-081-007	1st Gear, Main Shaft, 39 Teeth, 2.66 Ratio, Fits F-Body, Cobra, Viper, REM Superfinished	41
1386-082-005RSF	1386-082-005	2nd Gear, Main Shaft, 43 Teeth, 2.66 Ratio Fits F-Body, Viper, Cobra, REM Superfinished	25
1386-083-007RSF	1386-083-007	3rd Gear, Main Shaft, 37 Teeth, 2.66 Ratio Fits F-Body, Viper, Cobra, REM Superfinished	20
1386-086-004TG	1386-086-004	5th Gear, Main Shaft, 58 Teeth, Tooth Ground, 2.66 Ratio Fits F-Body, Viper, Cobra	126
1386-087-004TG	1386-087-004	6th Gear, Main Shaft, 67 Teeth, Tooth Ground, 2.66 Ratio Fits F-Body, Viper, Cobra	109
1386-070-002	1386-070-002	5th-6th Gear, Main Shaft, 37-29 Teeth	61
1386-088-003RSF	1386-088-003	Reverse Gear, Main Shaft, 35 Teeth, REM Superfinished	73
1386-077-008RSF	1386-077-008	Counter Shaft, 36-33-28-17 Teeth, 2.66 Ratio, 2-Piece Design, REM Superfinished	105
TNKT1873 H&S RSF	1386-590-001	1-2 Synchro Assembly, Fits All T56 Except Corvette and GTO, REM Superfinished	30
1386-590-002H&S	1386-590-002	3-4 Synchro Assembly, Fits All T56 Except Corvette and GTO, REM Superfinished	14
TUAS1365		TREMEC Original Equipment: 1-2 Friction Cone Blocker Ring, Fits F-Body, Cobra, Viper	36
1386-025-001		TREMEC Original Equipment: Inner Cone, Fits F-Body, Cobra, Viper	37
1386-091-001		TREMEC Original Equipment: 1-2 Synchro Ring, Outer	35
1386-591-005		TREMEC Original Equipment: 5-6 Synchro Ring	117
1386-591-003		TREMEC Original Equipment: 3-4 Synchro Ring	14
1386-091-007		TREMEC Original Equipment: Reverse Synchro Ring	70
1386-566-024	1386-566-024	T56 Extension Housing for Camaro, Firebird, GTO	86

Transmission

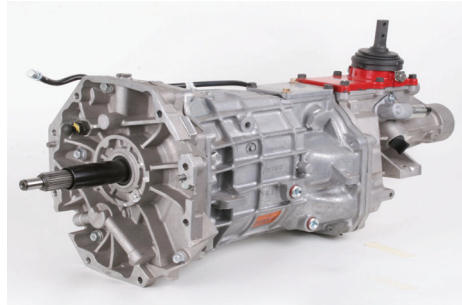
Ring & Pinions, Axles , Overhaul Kits

We stock a complete differential line. Our Ring & Pinions are the highest quality in the aftermarket, and we also off both Timken and Koyo bearing kits. Contact our Sales Representatives for more information. Gears we stock and are ready to ship include:

- Chrysler 8.25"/9.25 Dry 2-Cut (Same as OEM)
- Dana 30/35/44/60/70/80
- Ford 8.8"/9"/9.75"/10.25"
- GM 7.5"/8.2"/8.25"/IFS/8.5" Dry 2-Cut (Same OEM)
9.5"/10.5"/11.5"
- Toyota 7.5"/8"/9"/9.5"
- Suzuki Samurai
- Nissan H233

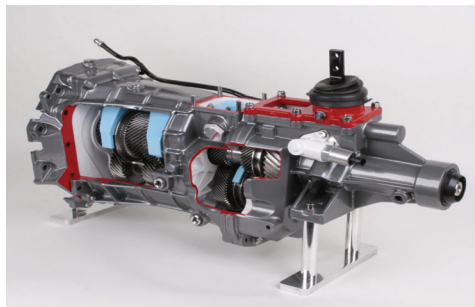


TREMEC OEM Full Assemblies

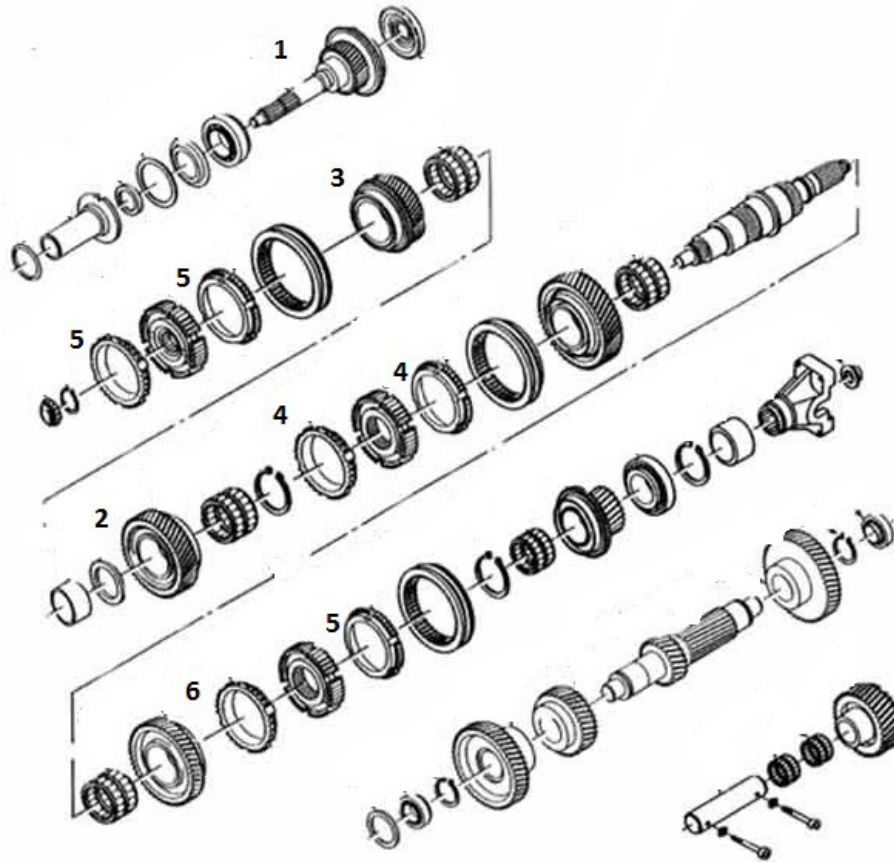


Transmission

Transmission	P/N	APPLICATION	TORQUE CAPACITY (LB-FT)
T-5, 5-SPEED	1352-000-251	FORD	300
TKO, 5-SPEED	TCET4616 (3.27)	GM	500
	TCET4618 (2.87)	GM	600
	TCET5009 (2.87)	GM	600
	TCET4615 (3.27)	FORD	500
	TCET4617 (2.87)	FORD	600
	TCET5008 (2.87)	FORD	600
	TCET5201 (3.27)	FORD	500
MAGNUM, 6-SPEED	TUET11009 (2.66)	GM	700
	TUET11012 (2.97)	GM	700
	TUET11010 (2.66)	FORD	700
	TUET11011 (2.97)	FORD	700
MAGNUM XL, 6-SPEED	TUET11430 (2.66)	GM	700
	TUET11940 (2.97)	GM	700
	TUKT12019 (2.66)	05-UP Mustang	700
	TUKT12021 (2.97)	05-UP Mustang	700



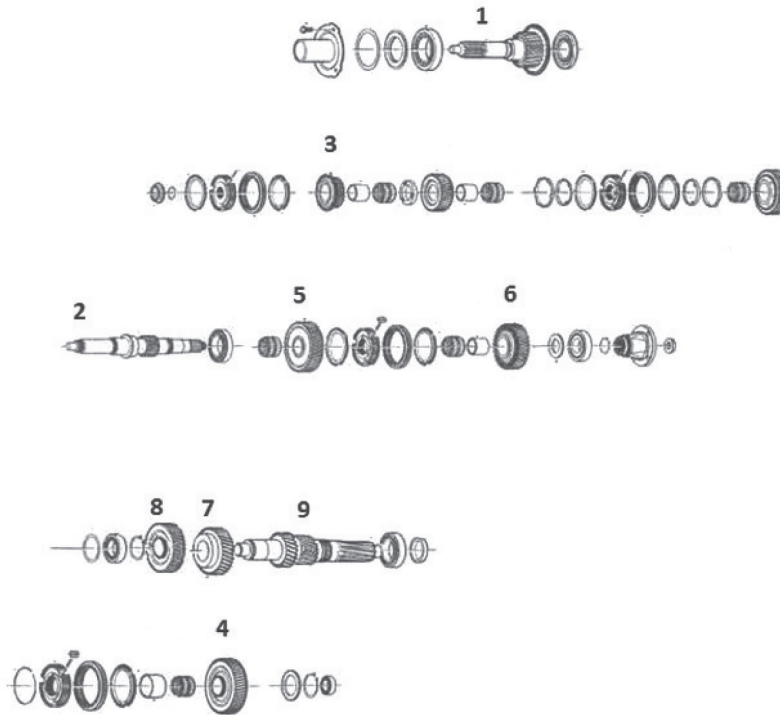
ZF S5-42 / ZF S5-47 Transmission



The ZF S5-42 was used on 1987 to 1994 pickups, and the stronger S5-47 was introduced for the 1995 models. Both transmission models are extremely similar, with the S5-47 having a slightly higher input torque rating. Many, if not most partnumbers for internal components are the same for both transmissions.

P/N	OEM REF	DESCRIPTION	Reference
ZF542-16A	1307-202-128	Input Shaft, 34T, 9 5/8"	1
ZF542-21	1307-204-320	2nd Gear, Main Shaft, 51T	2
ZF542-11A	1307-204-322	3rd Gear, Main Shaft, 40T	3
ZF542-14A	1307-304-181	1-2 Brass Synchro Ring	4
ZF542-23A	1307-206-003	3-4 Shift Fork, Fits Both ZF S5-42 and S5-47M	
ZF542-14	1307-304-182	3/4/5 Brass Synchro Ring	5
ZF542-23B	1307-306-019	5th-Reverse Shift Fork, Fits Both ZF S5-42 and S5-47M	
ZF542-14B	1307-304-175	Reverse Brass Synchro Ring	6
ZF547-16B	1317-202-016	Input Shaft, 29T	1
ZF547-23	1317-298-001	1-2 Shift Fork, Fits Both ZF S5-42 and S5-47M	
ZF547-14C	1317-304-150	3/4/5 Brass Synchro Ring	4
ZF547-14E	1317-304-038	Reverse Brass Synchro Ring	6

ZF S6-650 / ZF S6-750 Transmission



Transmission

The ZF S6-650 and S6-750 are heavy duty manual transmissions used in various diesel pickup applications. The S6-650 was first introduced in 1999 in Ford's new Super Duty platform. The stronger S6-750 replaced the S6-650 for 6.0L Power Stroke engines beginning in 2003. Ford continued to offer the S6-750 behind the 6.4L Power Stroke until, 2011, it's last year with a manual transmission. The S6-650 was also offered in Chevrolet Silverado and GMC Sierra pickups powered by the 6.6L Duramax diesel from 2001 through 2006. The gear ratios between the ZF S6-650 and S6-750 are identical, but input shafts are different.

P/N	OEM REF	DESCRIPTION	Reference
ZF650-16	1319-202-026	Input Shaft, 23T, Fits Ford	1
ZF650-16A	1913-202-017	Input Shaft, 23T, Fits Chevy/GM	1
ZF650-2	1319-304-069	Main Shaft, Ford 4x2, (Does not fit High Torque Diesel)	2
ZF650-2A	1319-304-070	Main Shaft, Ford 4x4 (Does not fit High Torque Diesel)	2
ZF650-2B	1319-304-094	Main Shaft, 4x4, Fits 99+ Ford High Torque Diesel	2
ZF650-2E	1319-304-114	Main Shaft, 4x4, 6.4L/6.8L	2
ZF650-11	1319-204-011	3rd Gear, Main Shaft, 27T, Fits Both S650/S750	3
ZF650-18	1319-303-052	5th Gear, Main Shaft, 54T, Fits Both S650/S750	4
ZF650-31	1319-204-056	Creeper Speed Gear, 41T, Fits Both S650/S750	5
ZF650-36	1319-204-026	Reverse Gear, Main Shaft, 37T, Fits Both S650/S750	6
ZF650-34	1319-303-050	3rd Gear, Counter Shaft, Fits Both S650/S750	7
ZF650-9	1319-303-049	4th Gear, Counter Shaft, 39T, Fits Both S650/S750	8
ZF650-3	1319-303-048	1/2/Reverse Counter Shaft	9
ZF650-23	1319-306-045	Creeper/Reverse Shift Fork	
ZF750-2A	1319-304-108	Main Shaft, Ford 4x4	
ZF750-16	1319-202-024	Input Shaft; 2003 and Newer Ford Super Duty	

Manual Transmission Components

NV 3500/3550

P/N	OEM REF	Description
T290-16B	4741294	Input Shaft, 26T
T290-8D43	12547403	Counter Shaft, 34x28x23x15x14x43T
T290-36A	12543818	Reverse Gear, Main Shaft, 40T

AX5/AX15

P/N	OEM REF	Description
AX5-16B	83506020	Input Shaft, Gas 4 CYL
AX5-2A	83503105	Main Shaft, 4x4
AX5-8A	83506023	Counter Shaft, 45-31-20-13-14T
AX5-15	83500642	Slider, 5th Gear
G52-5		5th Gear Set; 24T & 45T

M5R1

P/N	OEM REF	Description
M5R1-11	E8TZ-7101A	3rd Gear, Main Shaft, 29T
M5R1-2.5A	F1TZ-7124CC	3-4 Synchro Ring Assembly
M5R1-14	E8TZ-7107C	5th Synchro Ring, 30T
M5R1-14A	E8TZ-7107B	Reverse Synchro Ring, 36T
M5R1-14B	F1TZ-7107B	5th Synchro Ring, 30T, Larger Ring than M5R1-14
M5R1-14C	F1TZ-7107C	Reverse Synchro Ring, 24T
MAZ-14A	W501-17-725C	5th Synchro Ring, 33T, Mazda and M5R1

M5R2

P/N	OEM REF	Description
M5R2-21	E8TZ-7102D	2nd Gear, Main Shaft, 35T
M5R2-11	E8TZ-7101B	3rd Gear, Main Shaft, 30T
M5R2-19A	F1TZ-7158C	5th Gear, Counter Shaft, Updated, 33T
M5R2-14G	F1TZ-7107G	1/2/3/4 Synchro Ring
M5R2-14	E8TZ-7107E	Reverse Synchro Ring, Older Version, 36T
M5R2-14A	F1TZ-7107A	Reverse Synchro Ring, Updated, 33T
M5R2-14D	F1TZ-7107D	Reverse Synchro Ring, Updated, 30T
M5R2-23C	F75Z-7230BA	1-2 Aluminum Shift Fork
M5R2-23D	F75Z-7231AA	3-4 Aluminum Shift Fork

Manual Transmission Bearing and Seal Rebuild Kits

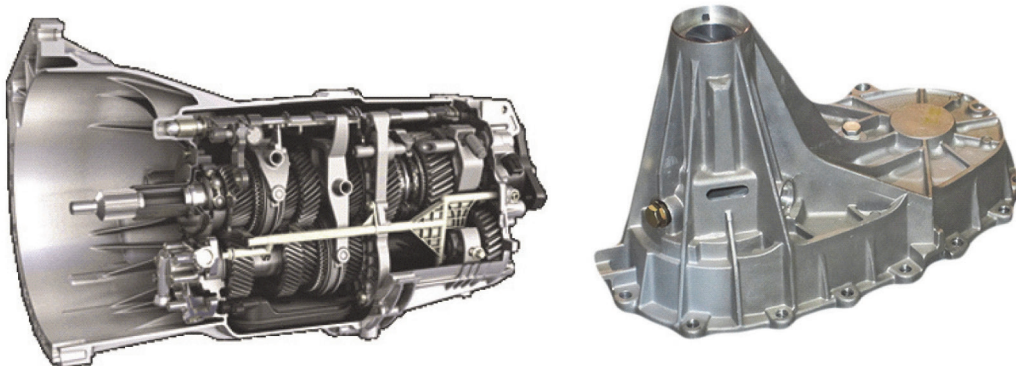
***All Manual Transmission Kits are available with synchronizer rings, contact a sales representative for more details**

P/N	Description	Application
70-4500DT	NV4500 Manual Transmission Rebuild Kit	DODGE RAM 1500 1994-2004, ALL ENGINES DODGE RAM 2500 1994-2004 L6-5.9L; 1994-2003 V10-8.0L; 1994-96 V8-5.2L; 2003-05 V8-5.7L; 1994-2002 V8-5.9L DODGE RAM 3500 1994-2005 L6-5.9L; 1994-2003 V10-8.0L; 2003-05 V8-5.7L; 1994-2004 V8-5.9L DODGE D150, D250, D350, W250
70-5600T	NV5600 Manual Transmission Rebuild Kit	DODGE RAM 2500 1998-2005 L6-5.9L DODGE RAM 3500 1998-2005 L6-5.9L
70-FC200T	G56 Manual Transmission Rebuild Kit	DODGE RAM 2500 2005-15; 3500 2005-15; 4500 2008-15; 5500 2008-15
70-S6-650ZFT	ZF650 Manual Transmission Rebuild Kit	FORD F250 SUPER DUTY
70-300ZFT	S5-42/S5-47 Manual Transmission Rebuild Kit	FORD F150 1988-96 FORD F250 1988-97 FORD F250 SUPER DUTY 1991-2001 FORD F350 1988-97 FORD F350 SUPER DUTY 199-2001
70-300ZFBDT	S5-42/S5-47 Manual Transmission Rebuild Kit (Limited Kit)	FORD F150 1988-96 FORD F250 1988-97 FORD F250 SUPER DUTY 1991-2001 FORD F350 1988-97 FORD F350 SUPER DUTY 199-2001
70-248T	M5R2 Manual Transmission Rebuild Kit	FORD F150 1988-89, 1999-2003, 2006-08 FORD F250 1988-89, 1999; BRONCO 1988-96
70-247T	M5R1 Manual Transmission Rebuild Kit	FORD EXPLORER 1991-2001; RANGER 1988-2011; AEROSTAR 1988-89; BRONCO 1990 MAZDA B2300, 3000, 4000, NAVAJO
70-235BT	NV3500 Manual Transmission Rebuild Kit	CHEVROLET BLAZER 1992-2005; C1500 1991-99; C2500 1991-98; K1500 1991-99; K2500 1991-98 CHEVROLET S10 1991-2003; SILVERADO 1500 1999-2007; TAHOE 1995-96 GMC C1500 1991-99; C2500 1991-99; K1500 1991-99; K2500 1991-98; SIERRA 1500 1999-200; SONOMA 1991-2003; YUKON 1992-96
70-235ET	NV3500 Manual Transmission Rebuild Kit	CHEVROLET BLAZER 1996-2005; C1500 1996-99; C2500 1996-98; K1500 1996-99; K2500 1996-98 CHEVROLET S10 1996-2003; SILVERADO 1500 1999-2007 GMC C1500 1996-99; C2500 1996-98; K1500 1996-99; K2500 1996-98; SIERRA 1500 1999-2007; SONOMA 1996-2003
70-56T	T56 Manual Transmission Rebuild Kit	CADILLAC CTS 2004-07; CAMARO 1993-2002; VIPER 1992-2006 & 2008; MUSTANG 2003-04;
70-56T	T56 Manual Transmission Rebuild Kit	FIREBIRD 1993-2002; GTO 2004-06
70-5T	T5 Manual Transmission Rebuild Kit	FORD: MUSTANG/THUNDERBIRD 1983-84; CHEVROLET: BEL AIR 1981, CAMARO 1982-87, CHEVETTE 1981-82, S10 1982-87 JEEP: CHEROKEE 1984-85; CJ5 1982-83; CJ7 1982-86; J10 1982-83; J20 1982-83 CADILLAC: SEVILLE, FLEETWOOD, ELDORADO, DEVILLE, CIMARRON 1982 FIREBIRD 1983-87
70-5WT	T5W Manual Transmission Rebuild Kit	CAMARO 1988-2002; MUSTANG 1985-2008; THUNDERBIRD 1985-88; FIREBIRD 1988-2002;
70-3650T	TR3650 Manual Transmission Rebuild Kit	MUSTANG GT 2001-2010
70-BW45T	T45 Manual Transmission Rebuild Kit	MUSTANG 1996-2002
70-FT160T	AX5 Manual Transmission Rebuild Kit	JEEP CHEROKEE 1988-2000; WRANGLER 1988-92
70-FT300T	AX15 Manual Transmission Rebuild Kit	JEEP CHEROKEE 1989-99; GRAND CHEROKEE 1993-94; TJ 1997; WRANGLER 1989-95
70-FN530T	NISSAN Manual Transmission Rebuild Kit	Nissan Frontier 2001-04
70-FS100T	SUZM Manual Transmission Rebuild Kit	SUZUKI SAMURAI 1986-95

Warranty Policy:

PROACTIVE GEARS warrants the original retail purchaser that all PROACTIVE GEARS products will be free from defects in materials and workmanship for 12 MONTHS. PROACTIVE GEARS makes no other warranty of any kind, express or implied. All other warranties, including but not limited to an implied warranty of merchantability or fitness for a particular purpose, are excluded. This warranty is offered provided that the PROACTIVE GEARS product has been installed and maintained correctly, and that it has not been subject to modification, accident, abnormal use or misuse.

This warranty does not cover, and PROACTIVE GEARS shall not be liable for, incidental or consequential damages, including loss of time, road service charges, labor charges, inconvenience, loss of vehicle use, loss of revenues, or loss or damage to personal property (including loss or damage to vehicle parts due to the failure of the PROACTIVE GEARS product). In addition, this warranty does not cover, and PROACTIVE GEARS shall not be liable for, any undertaking, representation, or agreements made by dealers or other third parties selling PROACTIVE GEARS products.



Return Policy:

Returns are accepted up to 30 days after purchase and require a RMA (Return Merchandise Authorization) number. All returns must be new, unopened, uninstalled and unmodified. Customer is responsible for shipping charges on returns/ exchanged items. All returns are subject to a 15% restocking fee.

Disclaimer: PROACTIVE GEARS is in no way affiliated with any brand names listed or displayed in this catalog. References to brands, part numbers, and applications are for reference only. PROACTIVE GEARS products are aftermarket products and are not manufactured by the Original Equipment Manufacturer unless noted. Photos are for illustrative purposes only.

Transfer Case Warranty Policy:

- ProActive Gears Transfer Case assembly warranties are for a period of one (1) year from the date of installation or 12,000 miles (whichever comes first) providing the original purchaser retains a copy of the invoice.
- An RMA (Return Merchandise Authorization) must be requested prior to sending in any product for a warranty claim.
- Part(s) returned need to include the full name and address of the installer, store where purchased, and a detailed explanation of the problem must accompany the returned part(s).
- ProActive Gears will examine each such return and issue credits based on their findings.
- Should ProActive Gears determine such warranty was not due to their processes, material and/or workmanship, credit will be denied.

Transfer Case Core Return Parameters:

All transfer case cores returned to ProActive Gears, in sound condition, drained of fluid, inclusive of all parts, and packed in original dunnage will be credited to the customer's account at 100% of the original invoiced core amount.

Reasons for less than 100% Credit:

- Hole in case (larger than 1" in diameter) or cracked case – 50% credit
- Core disassembled – 50% credit
- Motor core missing from case purchased w/motor – core value less \$35.00
- Missing yokes (Front or Rear) – core value less \$40.00
- Missing Extension Housing – core value less \$40.00
- Oil not drained – core value less \$25.00
- Core returned without shipping dunnage – core value less \$120.00
- Dunnage returned without core – \$120.00
- If a customer returns a core that does not match the replacement sold to them by ProActive Gears, no credit will be given. These cores will be returned to the customer upon request.

